



CIRCU-LATOR

TROUBLE SHOOTING

GUIDE

The most common problems and their solutions



DANGER



TO PREVENT SERIOUS or FATAL INJURY

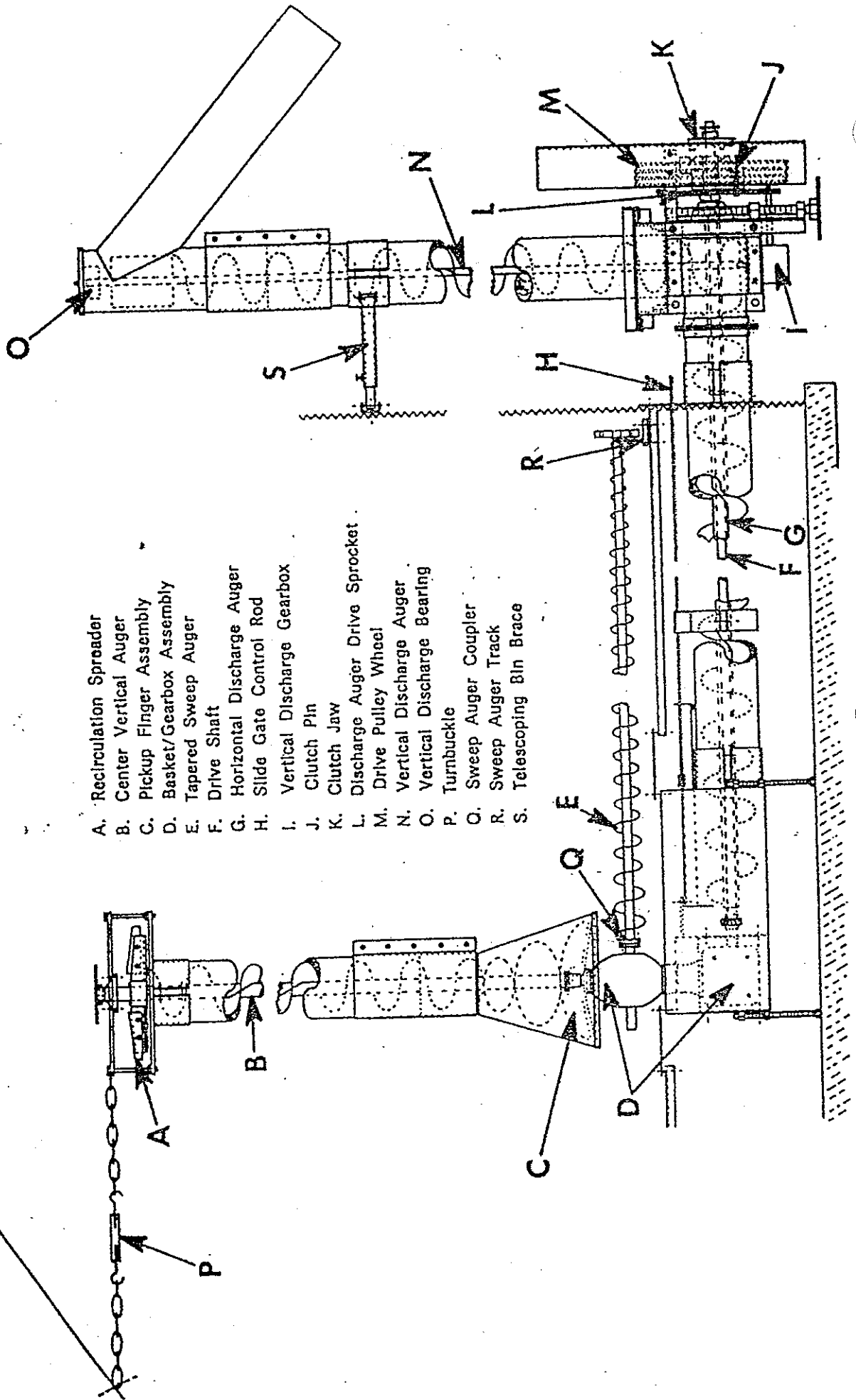
DO NOT enter bin until machine has been turned off at
Circu-Trol and main power DISCONNECTED.

DO NOT enter bin for ANY reason while machine is in operation. The open sweep auger can revolve at a very hazardous rate of speed when little or no grain is present, such as when cleaning drying bin. The open sweep could strike or entangle you!

DANGER – If, for any reason, the Center Vertical Auger (if present) should jam (due to mechanical malfunction, foreign object or spoiled grain), the sweep auger can revolve at a very hazardous rate of speed. The open sweep could strike or entangle you!

Always use EXTREME CAUTION when operating this machinery. Do not operate this unit unless all belt shields are mounted in place and all electrical boxes are closed.

CIRCU-LATOR TERMINOLOGY



- A. Recirculation Spreader
- B. Center Vertical Auger
- C. Pickup Finger Assembly
- D. Basket/Gearbox Assembly
- E. Tapered Sweep Auger
- F. Drive Shaft
- G. Horizontal Discharge Auger
- H. Slide Gate Control Rod
- I. Vertical Discharge Gearbox
- J. Clutch Pin
- K. Clutch Jaw
- L. Discharge Auger Drive Sprocket
- M. Drive Pulley Wheel
- N. Vertical Discharge Auger
- O. Vertical Discharge Bearing
- P. Turnbuckle
- Q. Sweep Auger Coupler
- R. Sweep Auger Track
- S. Telescoping Bin Brace

TROUBLE SHOOTING

1. PROBLEM: Motor will not run

CAUSE(S)	SOLUTIONS
(A) Blown fuses	Check and replace
(B) Power off	Turn on
(C) Tripped overload heaters	Reset
(D) Tripped reset on motor	Reset
(E) Low voltage	Have electrician check
(F) Grain Level Indicator "OFF"	Turn "ON"

2. PROBLEM: Sweep won't travel around bin

CAUSE(S)	SOLUTIONS
(A) Something in bin at track	Remove grain and inspect
(B) Bad joint in track or rivet or screw pulled up	Clean under track and re-rivet or re-lay as necessary
(C) Bad spider wheel or bonnet bearing	Check and replace as necessary
(D) Bad center section bearing	Check and replace as necessary
(E) Interference between spider wheel and gearbox	Check bolts, trash build-up, etc.
(F) Worn sweep auger	Replace
(G) Uneven floor	Re-set if necessary

3. PROBLEM: Grain piling in center of bin

CAUSE(S)	SOLUTIONS
(A) Grain Spreader not adjusted	Adjust per instructions
(B) Recirculating spreader worked up on shaft or wrong size fins	Adjust spreader to approximately 1/16" to 3/16" clearance Change spreader fins
(C) Pickup fingers in cone of Center Vertical too high	Adjust clearance to 3/8" to 5/8" above wheel
(D) Bad sweep or damaged flippers on sweep	Replace sweep

4. PROBLEM: Unit breaks grain excessively

CAUSE(S)	SOLUTIONS
(A) Pickup fingers in cone of Center Vertical too close to spider wheel	Adjust clearance to 3/8" to 5/8"
(B) Pickup fingers too close to side of cone	Adjust clearance to 1/2" to 1" from side
(C) Floor uneven — reducing clearance between flitting and floor	Re-set floor as necessary

5. PROBLEM: Auger shakes or hits tubing

CAUSE(S)	SOLUTIONS
(A) Improper installation — auger not straight	Check straightness — reset as necessary
(B) Shipping or handling damage	Notify factory — Return
(C) Fliting pulled away from shaft — especially at splices in fliting	Trim O.D. of fliting and tack weld to shaft if necessary
(D) Bad auger — bent or crooked	Notify factory and return flite assembly
(E) Bad bearing in gearbox or in head section	Check and replace as necessary

6. PROBLEM: Center Vertical shakes

CAUSE(S)	SOLUTIONS
(A) Center Vertical not perpendicular to floor	Adjust chains to hold auger
(B) Gearbox not leveled properly	Adjust to run cross shaft parallel to floor
(C) No flex in coupling on pickup fingers	Remove and clean
(D) Bad bearing at top of Center Vertical	Replace
(E) Bad auger assembly	Replace
(F) Bearing bad in gearbox sets vibration that shows in Center Vertical	Repair or replace gearbox

7. PROBLEM: Unit won't start under grain

CAUSE(S)	SOLUTIONS
(A) Wet grain	Dry as needed
(B) Unpolished augers	Remove some grain and run to polish augers
(C) Bow in sweep from weight of grain	Turn on sweep as unit is filling
(D) Bad spider, bonnet or center section bearing	Replace as necessary
(E) Grain left in augers	Work augers by hand to remove packed grain — always empty augers, including Center Vertical
(F) Pickup fingers too low, hitting spider wheel	Adjust clearance to 3/8" to 5/8" above spider wheel