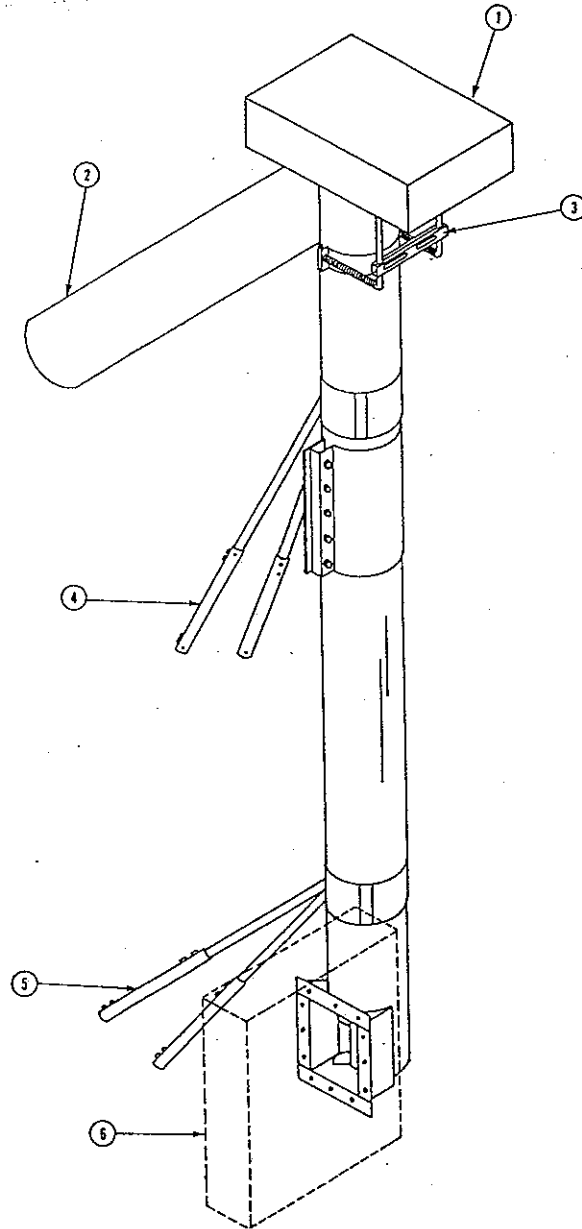


SHIVVERS

CORYDON, IOWA

TOP DRIVE VERTICAL UNLOADER PARTS MANUAL

ITEM	DESCRIPTION	QTY	PART NO.	BREAK-DOWN PAGE NO.
1	Horizontal Belt Shield Assembly	1	269-048A	22
2	Downspout, 6"	1	235A-001A	4
3	Motor Mount Assembly	1	423-016-001A	9
4	Tripod Bin Brace, 6"	1	See Break-Down	7
5	Bipod Bin Brace, 6"	1	423-009-001A	6
6	Vertical Belt Shield Assembly	1	237-038A	21



ASSEMBLY NUMBERS

ITEM	DESCRIPTION	QTY	PART NO.
-	6" Top Drive Vertical Unloader Short 15'4"	1	66A-001A
-	6" Top Drive Vertical Unloader Medium 18'0"	1	66B-001A
-	6" Top Drive Vertical Unloader Tall 20'8"	1	66C-001A

CORYDON, IOWA

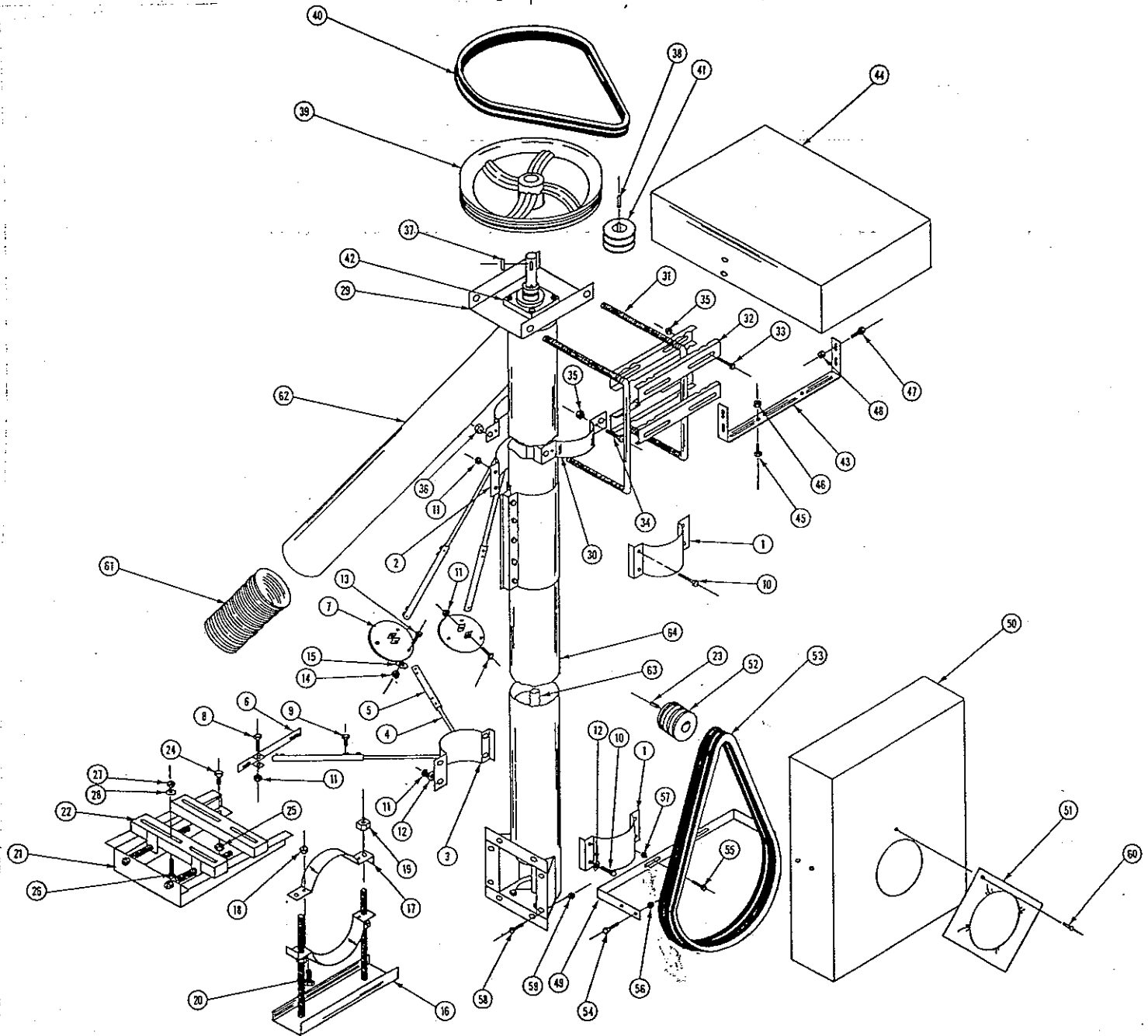
VERTICAL UNLOADER

ITEM	DESCRIPTION	QTY	PART NO.	BREAK-DOWN PAGE NO.
1	Half Band	2	201Z-023P	
2	Half Band Weldment, 6" Triple Earred	1	273-009W	
3	Half Band Weldment, Earred	2	237-004W	
4	Support Leg, Inside 30" Lg	7	237-035P	
5	Support Leg Weldment, Outside	7	237-034W	
6	Bracket Weldment, Bin Brace	4	237-005W	
7	Round Foot Plate Weldment	3	269-006W	
A	Top Drive Vertical Unloader Sack	1	240-003A	
8	Capscrew, Hx 3/8"-16x2-1/2", Gr. 2	17	F-1006-30	
9	Capscrew, Hx 3/8"-16x3/4", Gr. 5	15	F-1015-23	
10	Capscrew, Hx 3/8"-16x1-3/4", Gr. 2	13	F-1006-28	
11	Locknut, Hx 3/8"-16 W/Nyloc	30	F-1239	
12	Washer, Flat, Std, Steel, 3/8"	13	F-1009-03	
13	Bolt, Bin W/Washer 5/16"-18x1, Gr. 5	18	F-1027-02	
14	Nut, Hx Znc Pltd, 5/16"-18 Nyloc	18	F-1005-02	
15	Washer, Flat, Std, Steel, 5/16"	18	F-1009-02	
16	Stand, Horizontal Weldment	1	222-057W	
17	Half Band	2	222-079P	
18	Locknut, Hx 3/8"-16 W/Nyloc	2	F-1239	
19	Nut, Hx Znc Pltd, 3/4"-10 Unc	4	F-1011-07	
20	Capscrew, Hx 3/8"-16x1-3/4"	2	F-1006-28	
21	Motor Mount Weldment	1	237-010W	10
22	Slide Weldment, Plain	1	237-006W	
23	Key	1	See Chart	
B	Vertical Motor Mount Sack	1	237-015A	
24	Capscrew, Hx 1/2"-13x1, Gr. 2	3	F-1006-45	
25	Nut, Hx Znc Pltd, 1/2"-13, Stover	3	F-1005-05	
26	Capscrew, Hx 3/8"-16x1-1/2", Gr. 2	4	F-1006-27	
27	Locknut, Hx 3/8"-16, Nyloc	4	F-1239	
28	Washer, Flat, Std, Steel, 3/8"	8	F-1009-03	
29	Plate Assembly, 6" Motor Mount	1	66-013A	
30	Half Band	2	222-078P	
31	Leg Weldment, Motor Mount	2	273-010W	9
32	Motor Mount Channel	4	530-015P	
C	6" Motor Mount Sack	1	240-002A	
33	Bolt, Carriage, 3/8"-16x3, Gr. 2	4	F-1024-01	
34	Capscrew, Hx 3/8"-16x2, Gr. 2	2	F-1006-29	
35	Locknut, Hx 3/8"-16 W/Nyloc	6	F-1239	
36	Nut, Hx Znc Pltd, 3/8"-10 Unc-2B	8	F-1011-07	
37	Key, 1/4" Sq x 1-3/4"	1	249Z-018P	
38	Key	1	See Chart	
39	Wheel Assembly, 15" Pulley	1	222-058A	5
40	Belt, Vee, Matched, #5L-51	2	D-3003-04	
41	Pulley, 2 Groove	1	See Chart	
42	Bearing, 4 Hole Flng 1-1/4" Bore	2	D-2002-02	
43	Bracket, Belt Shield	1	269-029P	
44	Continuous Flow Belt Shield Assembly	1	269-048A	22
D	Belt Shield Sack	1	269-016A	
45	Capscrew, Hx, 3/8"-16x3/4", Gr. 2	2	F-1006-23	
46	Locknut, Hx 3/8"-16, W/Nyloc	2	F-1239	
47	Bolt, Bin W/Washer, 5/16"-18x1, Gr. 5	4	F-1027-02	
48	Nut, Hx Znc Pltd, 5/16"-18, Nyloc	4	F-1005-02	
49	Bracket, Belt Shield	1	237-023P	
50	Vertical Belt Shield Assembly	1	237-038A	21
51	Clutch Cover	1	10-079P	
52	Pulley, 3 Groove	1	See Chart	
53	Belt, COG AX-60	3	D-3003-12	
E	Belt Shield Sack	1	222-061A	
54	Bolt, Bin W/Washer 5/16"-18x1, Gr. 5	4	F-1027-02	
55	Capscrew, Hx 1/2"-13x1, Gr. 2	2	F-1006-45	
56	Nut, Hx Znc Pltd, 5/16"-18 Nyloc	4	F-1005-02	
57	Nut, Hx Znc Pltd, 1/2"-13, Stover	2	F-1005-05	
58	Capscrew, Hx 3/8"-16x1, Gr. 2	8	F-1006-25	
59	Locknut, Hx 3/8"-16 W/Nyloc	6	F-1239	
60	Blind Rivet, 3/16"Ø, .126 x .250	1	F-1057	
61	Tubing, Flexible 6"	1	273-9027-01	
62	Downspout Weldment, 6" Top Drive	1	66-010W	4
63	Flite Weldment	1	See Chart	5
64	Transition Weldment	1	See Chart	4

2 GROOVE PULLEY

O.D.	I.D.	KEY SIZE	ASSEMBLY NUMBER	PULLEY NUMBER	KEY NUMBER
2-1/2"	7/8"	3/16"	249H-001A	249H-004P	249Z-020P
2-1/2"	1-1/8"	1/4"	249I-001A	249I-005P	249Z-018P
3-1/4"	7/8"	3/16"	249J-001A	249J-006P	249Z-020P
3-1/4"	1-1/8"	1/4"	249K-001A	249K-007P	249Z-018P
3-1/4"	1-3/8"	5/16"	249L-001A	249L-008P	249Z-019P
4"	7/8"	3/16"	249M-001A	249M-009P	249Z-020P
4"	1-1/8"	1/4"	249N-001A	249N-010P	249Z-018P
4"	1-3/8"	5/16"	249O-001A	249O-011P	249Z-019P

CORYDON, IOWA

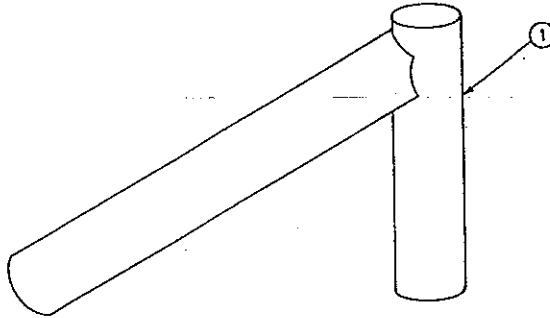


3 GROOVE PULLEY

O. D.	I. D.	KEY SIZE	ASSEMBLY NUMBER	PULLEY NUMBER	KEY NUMBER
2-1/2"	1-1/8"	1/4"	249A-001A	249A-023P	249Z-018P
3-1/4"	1-1/8"	1/4"	249B-001A	249B-012P	249Z-018P
3-1/4"	1-3/8"	5/16"	249C-001A	249C-013P	249Z-019P
4"	1-1/8"	1/4"	249D-001A	249D-014P	249Z-018P
4"	1-3/8"	5/16"	249E-001A	249E-015P	249Z-019P
4-1/2"	1-1/8"	1/4"	249F-001A	249F-002P	249Z-018P
4-1/2"	1-3/8"	5/16"	249G-001A	249G-003P	249Z-019P
3-1/2"	1-1/8"	1/4"	249P-001A	249P-016P	249Z-018P
3-1/2"	1-3/8"	5/16"	249Q-001A	249Q-017P	249Z-019P
3-3/4"	1-3/8"	5/16"	249R-001A	249R-021P	249Z-019P

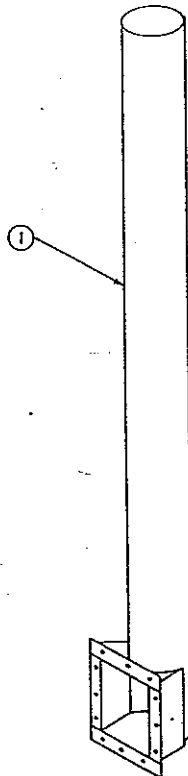
CORYDON, IOWA

ITEM	DESCRIPTION	QTY	PART NO.
1	Downspout Weldment, 6"	1	66-010W



6" TRANSITION WELDMENT
(66A-002W) - (66C-002W)

ITEM	DESCRIPTION	PART NO.	LENGTH
1	Transition Weldment, Short	66A-002W	14'
1	Transition Weldment, Medium	66B-002W	16'8"
1	Transition Weldment, Tall	66C-002W	19'4"

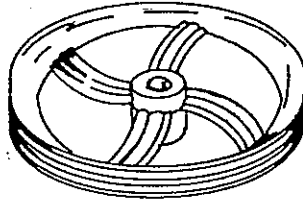


15" 2 GROOVE PULLEY ASSEMBLY

CORYDON, IOWA

(423-073-001A)

ITEM	DESCRIPTION	QTY	PART NO.
1	Pulley, 15" 2 Groove Assembly	1	222-058A



6" FLITE WELDMENT

(66A-005W) - (66C-005W)

ITEM	DESCRIPTION	PART NO.	LENGTH
1	Flite Weldment, Short	66A-005W	19'1"
1	Flite Weldment, Medium	66B-005W	21'9"
1	Flite Weldment, Tall	66C-005W	24'5"



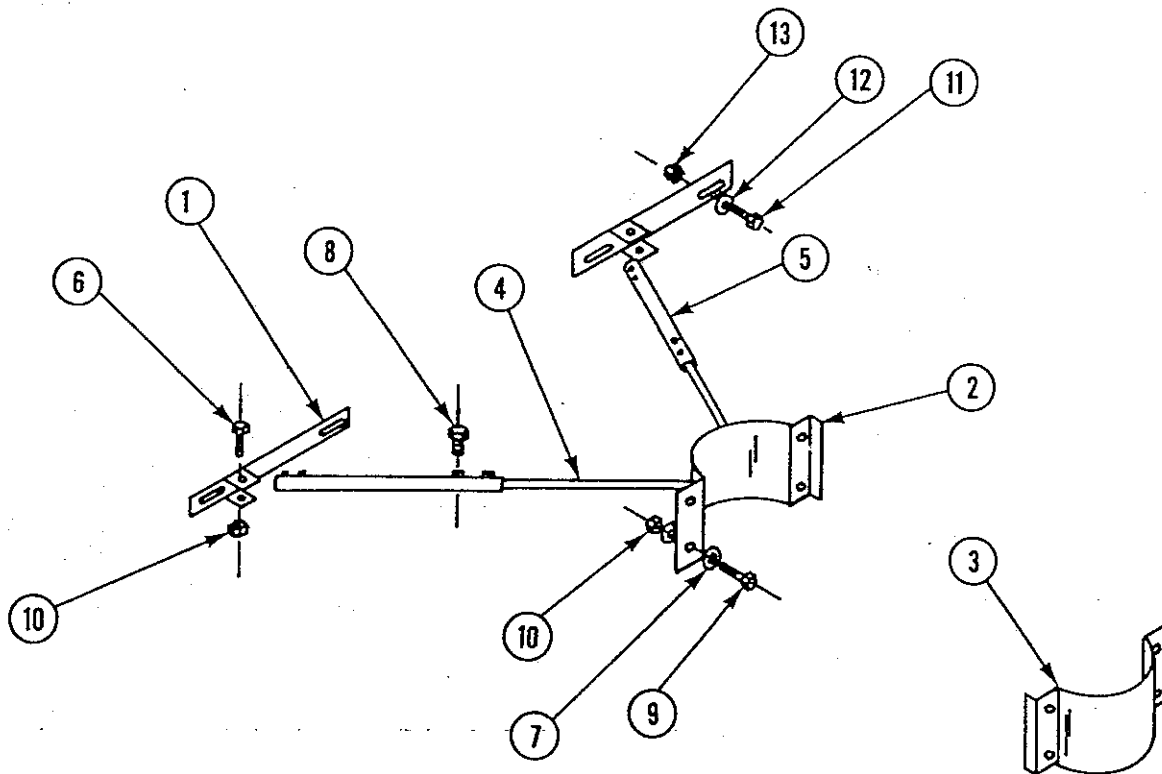
*counter clockwise
motor from shaft end.*

6" VERTICAL BIN BRACE

CORYDON, IOWA

(423-009-001A)

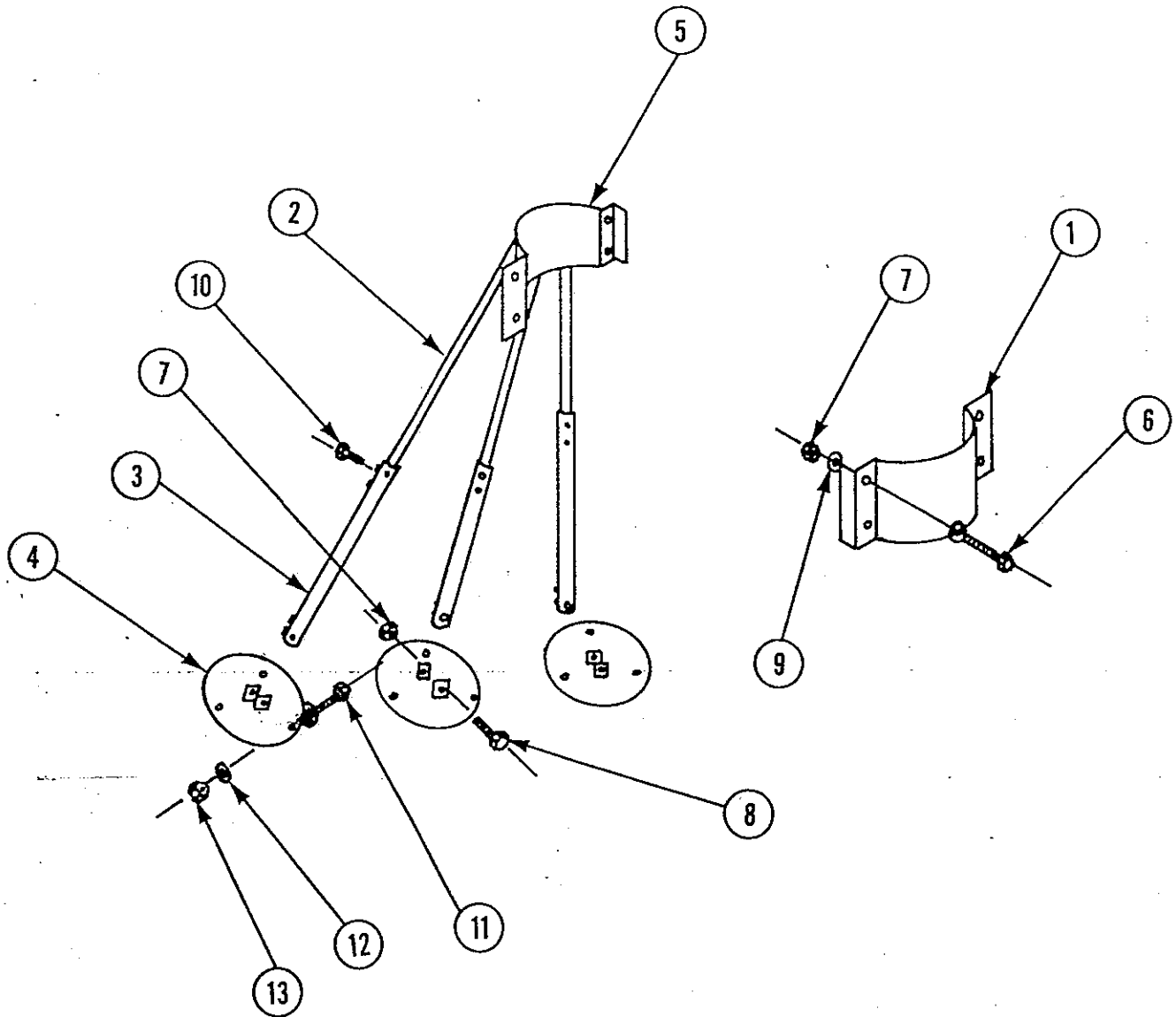
ITEM	DESCRIPTION	QTY	PART NO.
1	Bracket Weldment, Bin Brace	2	237-005W
2	Half Band Weldment, Earred	1	237-004W
3	Half Band, 6"	1	201Z-023P
4	Support Leg, Inside 30" Lg	2	237-035P
5	Support Leg Weldment, Outside	2	237-034W
A	Sack, Bin Brace	1	237-012A
6	Capscrew, Hx, 3/8"-16x2-1/2", Gr. 2	4	F-1006-30
7	Washer, Flat, Std, Steel, 3/8"	8	F-1009-03
8	Capscrew, Hx, 3/8"-16x3/4", Gr. 2	4	F-1006-23
9	Capscrew, Hx, 3/8"-16x1-3/4", Gr. 2	4	F-1006-28
10	Locknut, Hx 3/8"-16 W/Nyloc	8	F-1239
11	Bolt, Bin W/Washer 5/16"-18x1, Gr. 5	4	F-1027-02
12	Washer, Flat, Std, Steel, 5/16"	4	F-1009-02
13	Nut, Hx Znc Pltd, 5/16"-18 Nyloc	4	F-1005-02



CORYDON, IOWA

**6" ROOF BRACE
(278-001A)**

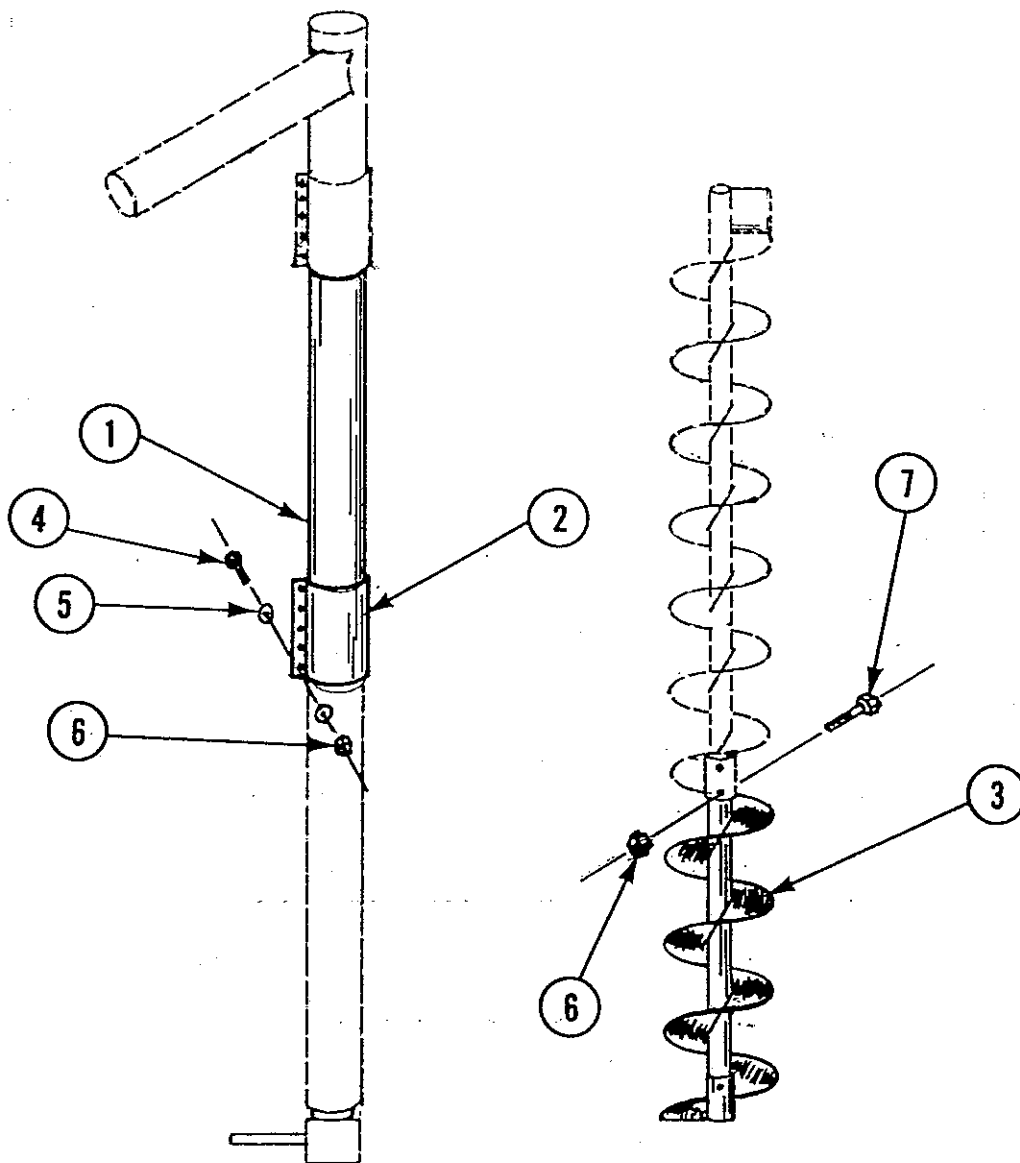
ITEM	DESCRIPTION	QTY	PART NO.
1	Half Band	2	222-079P
2	Support Leg, Inside 30" Lg	6	237-035P
3	Support Leg Weldment, Outside	6	237-034W
4	Round Foot Plate	3	269-006W
5	Half Band Weldment, 6" Triple Ear	1	273-009W
A	Sack, Bin Brace	2	237-012A
6	Capscrew, Hx, 3/8"-16x1-3/4", Gr. 2	4	F-1006-28
7	Locknut, Hx, 3/8"-16 W/Nyloc	8	F-1239
8	Capscrew, Hx, 3/8"-16x2-1/2", Gr. 2	4	F-1006-30
9	Washer, Flat, Std, Steel, 3/8"	8	F-1009-03
10	Capscrew, Hx, 3/8"-16x3/4", Gr. 2	6	F-1006-23
11	Bolt, Bin W/Washer 5/16"-18x1, Gr. 5	9	F-1027-02
12	Washer, Flat, Std, Steel, 5/16"	9	F-1009-02
13	Nut, Hx Znc Pltd, 5/16"-18 Nyloc	9	F-1005-02



CORYDON, IOWA

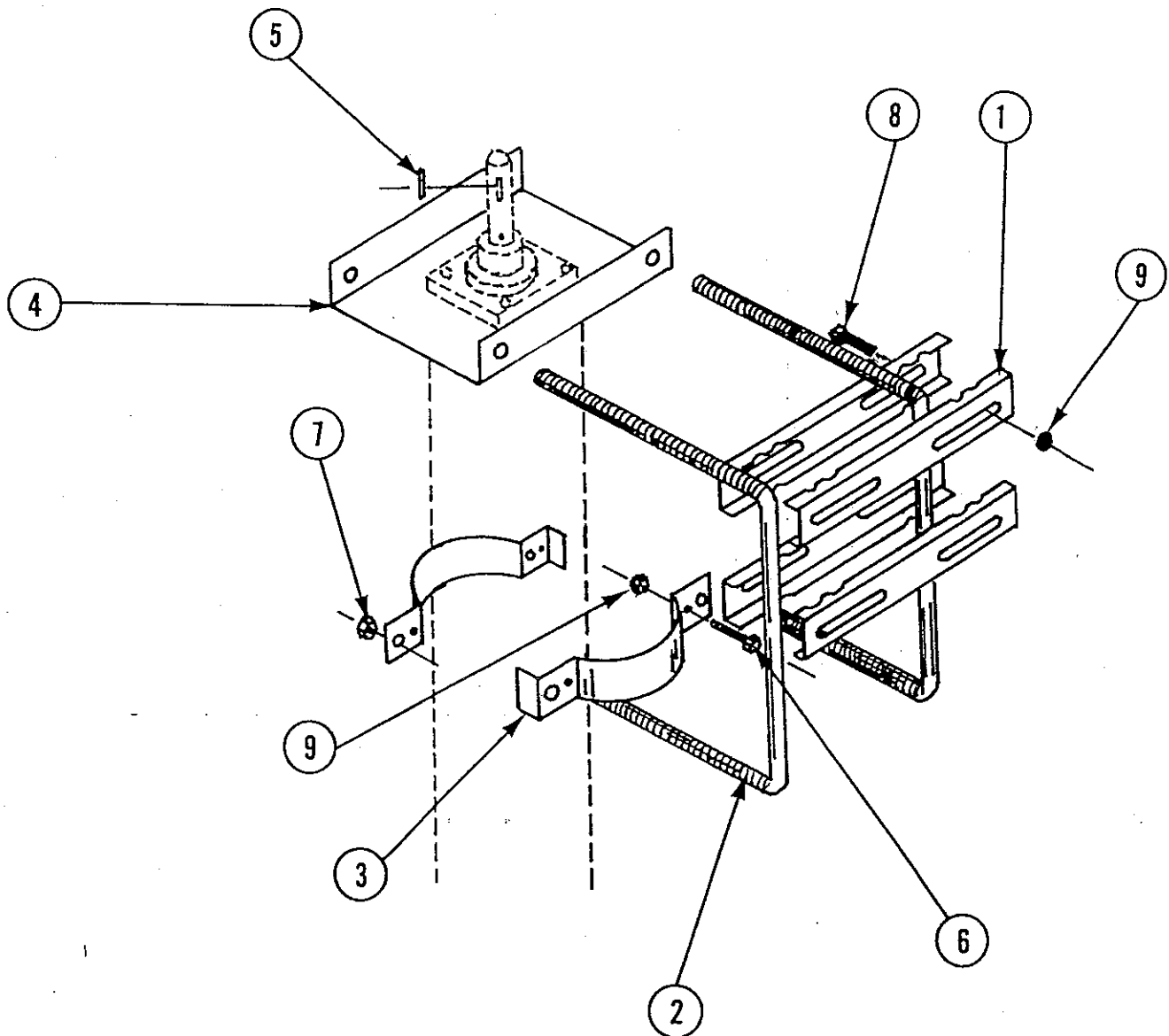
4' EXTENSION
(234B-001A)

ITEM	DESCRIPTION	QTY	PART NO.
1	6" Tube, 48" Long	1	234-019P
2	Sleeve, 6"	1	272-005P
3	4' Extension Flite Weldment	1	234-016W
4	Capscrew, Hx, 3/8"-16 x 1-1/2", Gr. 2	10	F-1006-27
5	Washer, Flat, Std, Steel, 3/8"	20	F-1009-03
6	Locknut, Hx, 3/8"-16 W/Nyloc	12	F-1239
7	Capscrew, Hx, 3/8"-16 x 2, Gr. 5	2	F-1073



6" MOTOR MOUNT ASSEMBLY

ITEM	DESCRIPTION	QTY	PART NO.
1	Channel, Regular	4	222-071P
2	Leg Weldment, Motor Mount	2	273-010W
3	Half Band, Stand	2	222-078P
4	Front Motor Mount Plate Assembly	1	273-002A
A	Sack, Motor Mount	1	240-002A
5	Key, 1/4" Sq x 1-3/4"	1	249Z-018P
-	Key, Square	1	249Z-020P
-	Key, Step	1	279-004P
6	Capscrew, Hx 3/8-16x2, Gr. 2	2	F-1006-29
7	Nut, Hx Znc Pltd, 3/8-10 Unc-2B	8	F-1011-07
8	Bolt, Carriage, 3/8-16x3, Gr. 2	4	F-1024-01
9	Locknut, Hx 3/8-16 W/Nyloc	6	F-1239

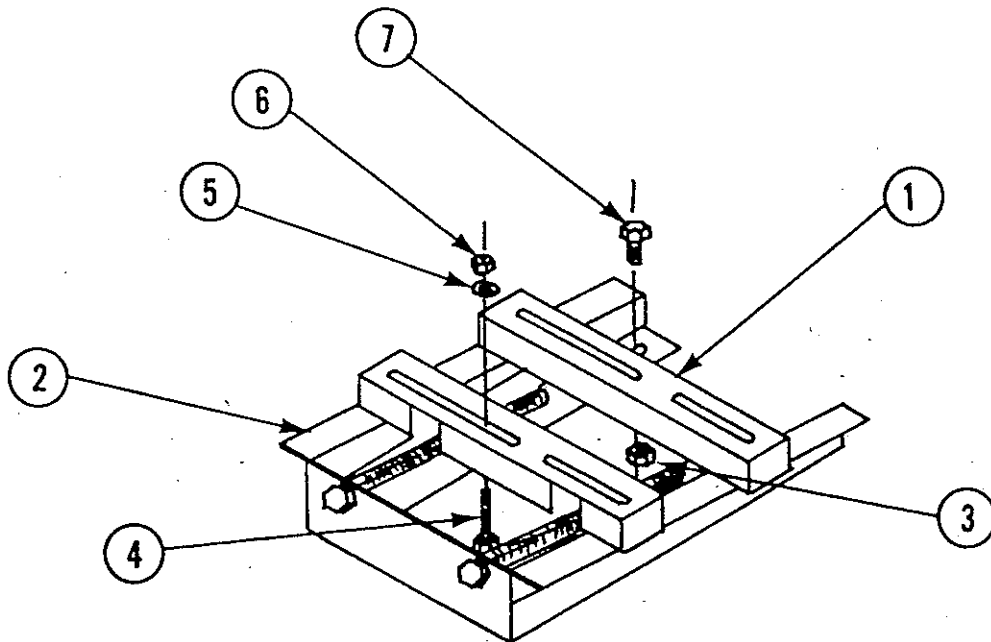


VERTICAL MOTOR MOUNT ASSEMBLY

CORYDON, IOWA

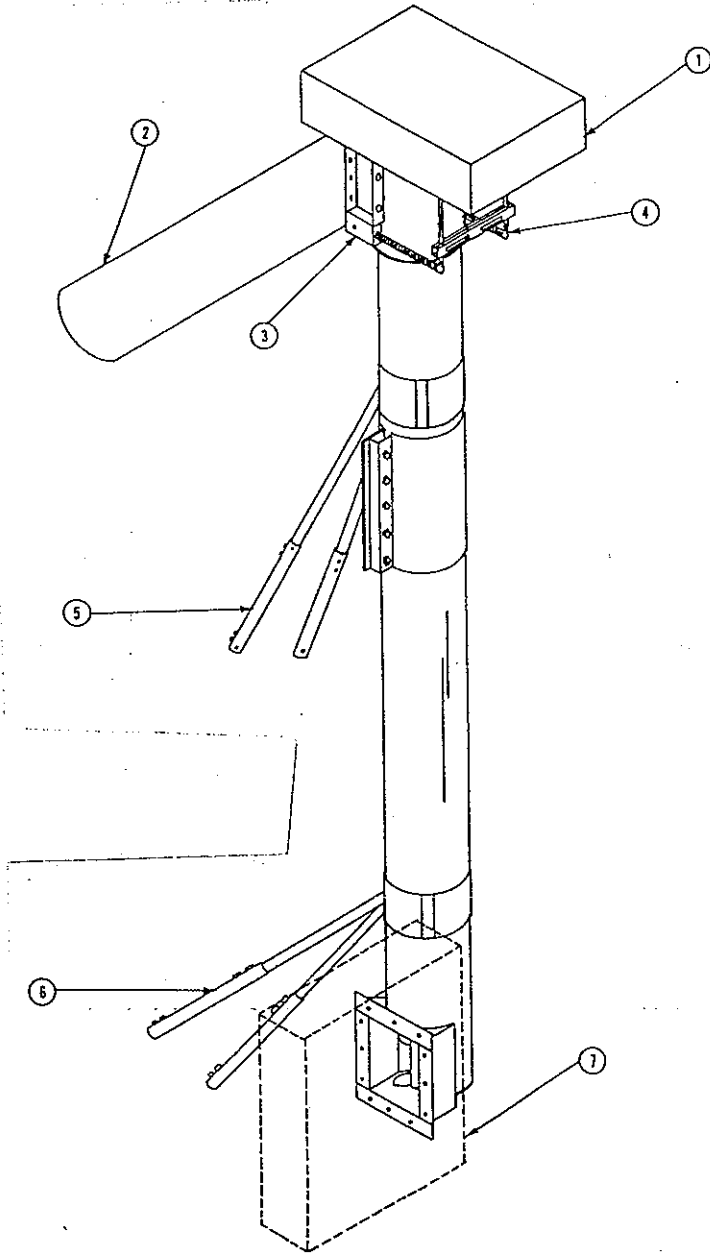
(423-008-001A)

ITEM	DESCRIPTION	QTY	PART NO.
1	Slide Weldment, Plain	1	237-006W
2	Motor Mount Weldment	1	237-010W
A	Sack, Vertical Motor Mount	1	237-015A
3	Nut, Hx Znc Pltd, 1/2"-13, Stover	3	F-1005-05
4	Capscrew, Hx, 3/8"-16 x 1-1/2", Gr. 2	4	F-1006-27
5	Washer, Flat, Std, Steel, 3/8"	8	F-1009-03
6	Locknut, Hx, 3/8"-16, W/Nyloc	4	F-1239
7	Capscrew, Hx 1/2"-13 x 1, Gr. 2	3	F-1006-45
	Washer, Flat, Std, 1/2"	4	F-1009-05



**8" TOP DRIVE VERTICAL UNLOADER
(395A-001A) - (395C-001A)**

ITEM	DESCRIPTION	QTY	PART NO.	BREAK-DOWN PAGE NO.
1	Belt Shield Assembly	1	269-048A	22
2	Down Spout Assembly	1	243A-001A	14
3	Transition Weldment	1	225-018W	18
4	Motor Mount Assembly	1	See Break-Down	19
5	Tripod Bin Brace, 8"	1	See Break-Down	17
6	Bipod Bin Brace, 8"	1	423-011-001A	16
7	Vertical Belt Shield	1	237-038A	21



ASSEMBLY NUMBERS:

ITEM	DESCRIPTION	QTY	PART NO.
-	8" Top Drive Vertical Unloader Short 15'4"	1	395A-001A
-	8" Top Drive Vertical Unloader Medium 18'0"	1	395B-001A
-	8" Top Drive Vertical Unloader Tall 20'8"	1	395C-001A

CORYDON, IOWA

8" TOP DRIVE VERTICAL UNLOADER

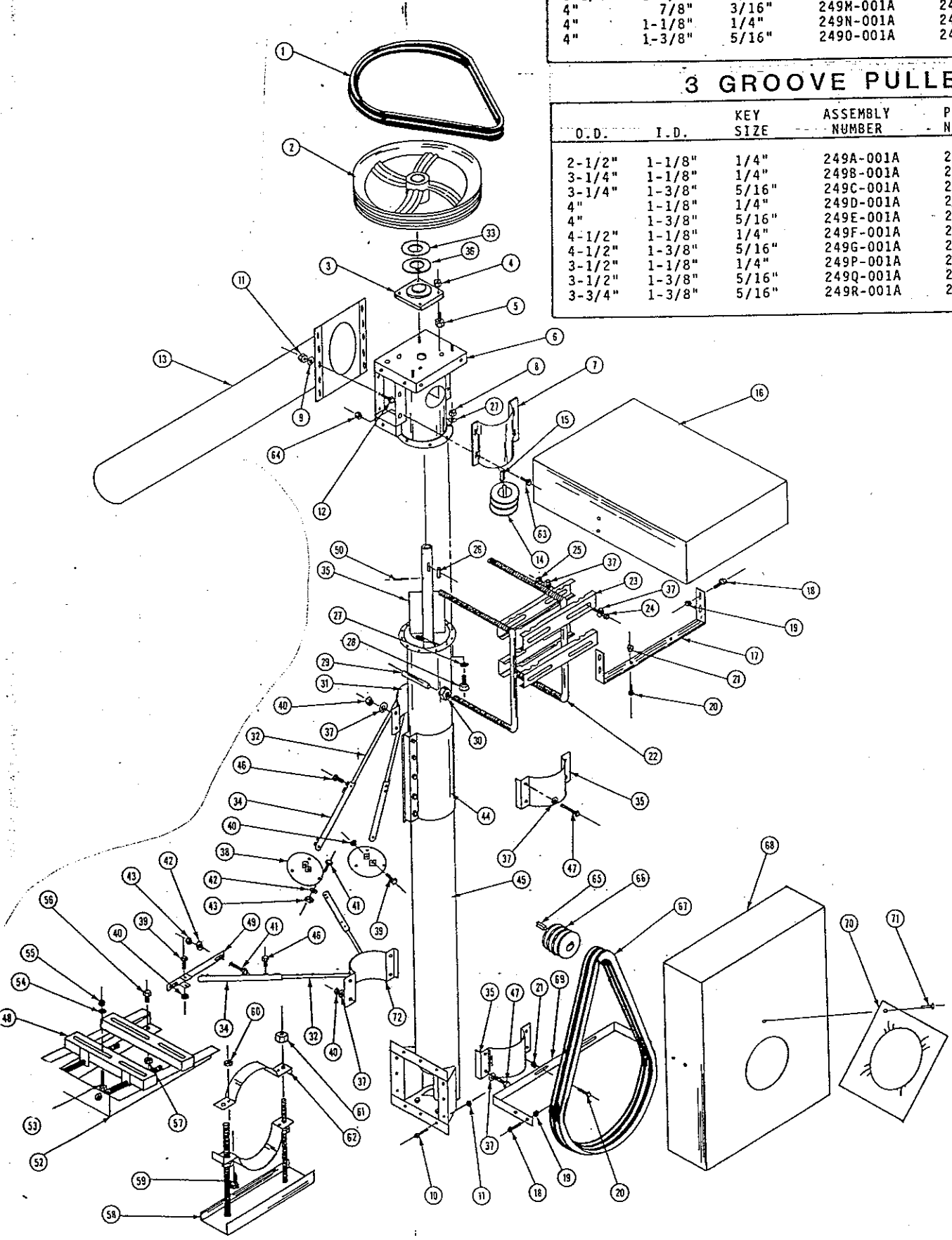
ITEM	DESCRIPTION	QTY	PART NO.	BREAK-DOWN PAGE NO.
1	Belt, Vee, Matched, #5L-51	2	D-3003-04	
2	Wheel Assembly, 15" Pulley	1	222-058A	15
3	Bearing, 4 Hole Flng 1-1/4" Bore	2	D-2002-02	
4	Nut, Hx Znc Pltd, 1/2"-13, Stover	4	F-1005-05	
5	Capscrew, Hx 1/2"-13x1-1/2", Gr. 2	4	F-1006-47	
6	Transition Weldment	1	225-018W	18
7	Half Band Cover	1	225-013P	
8	Nut, Hx Znc Pltd, 5/16"-18 Nyloc	8	F-1005-02	
9	Washer, Flat, Std, Steel, 3/8"	10	F-1009-03	
10	Capscrew, Hx, 3/8"-16x1-1/2", Gr. 2	5	F-1006-27	
11	Locknut, Hx 3/8"-16 W/Nyloc	15	F-1239	
12	Capscrew, Hx 3/8"-16x1, Gr. 2	10	F-1006-25	
13	Downspout Weldment	1	395-015W	14
14	Pulley, 2 Groove	1	See Chart	
15	Key	1	See Chart	
16	Horizontal Belt Shield Assembly	1	222-087A	22
17	Bracket, Belt Shield	1	222-073P	
A	Belt Shield Sack	2	222-061A	
18	Bolt, Bin W/Washer 5/16"-18x1, Gr. 5	8	F-1027-02	
19	Nut, Hx Znc Pltd, 5/16"-18 Nyloc	8	F-1005-02	
20	Capscrew, Hx, 1/2"-13x1, Gr. 2	4	F-1006-45	
21	Nut, Hx Znc Pltd, 1/2"-13, Stover	4	F-1005-05	
22	Motor Mount, Horizontal Leg Weldment	2	226-004W	19
23	Channel, Notched	4	222-070P	
B	Horizontal Motor Mount Weldment	1	222-060A	
24	Bolt, Carriage, 3/8"-16x3, Gr. 2	4	F-1024-01	
25	Locknut, Hx 3/8"-16 W/Nyloc	4	F-1239	
30	Nut, Hx Znc Pltd, 3/4"-10 Unc-2B	8	F-1011-07	
37	Washer, Flat, Std, Steel, 3/8"	8	F-1009-03	
26	Key, Wdrf.	1	D-1004-01	
27	Washer, Flat, Std, Steel, 5/16"	16	F-1009-02	
28	Capscrew, Hx 5/16"-18x1, Gr. 2	8	F-1006-15	
29	Pipe Spacer 6-1/2"	2	226-007P	
31	8"Triple Earred Half Band Weldment	1	397-002W	
32	Support Leg, Inside 30" Lg	7	237-035P	
33	Washer, Flat, 14 Ga. 1.875 x 1.281	A/R	F-8003-01	
34	Support Leg Weldment, Outside	7	237-034W	
35	Flite Weldment	1	See Break-Down	15
36	Washer, Flat, 10 Ga. 1.875 x 1.281	A/R	F-8003-02	
C	Top Drive Vertical Unloader Sack	1	240-003A	
37	Washer, Flat, Std, Steel, 3/8"	13	F-1009-03	
39	Capscrew, Hx, 3/8"-16x2-1/2", Gr. 2	17	F-1006-30	
40	Locknut, Hx 3/8"-16 W/Nyloc	30	F-1239	
41	Bolt, Bin W/Washer 5/16"-18x1, Gr. 5	18	F-1027-02	
42	Washer, Flat, Std, Steel, 5/16"	18	F-1009-02	
43	Nut, Hx Znc Pltd, 5/16"-18 Nyloc	18	F-1005-02	
46	Capscrew, Hx, 3/8"-16x3/4", Gr. 5	15	F-1015-23	
47	Capscrew, Hx, 3/8"-16x1-3/4", Gr. 2	13	F-1006-28	
38	Round Foot Plate	3	269-006W	
44	Tube & Sleeve Weldment	1	395-013W	
45	Tube Weldment	1	See Break-Down	14
48	Slide Weldment, Plain	1	237-006W	
49	Bracket Weldment, Bin Brace	4	237-005W	
50	Roll Pin Dbl Heavy 5/16"x2-1/4"	1	F-1257	
52	Motor Mount Weldment, Vertical	1	237-010W	20
D	Vertical Motor Mount Sack	1	237-015A	
53	Capscrew, Hx, 3/8"-16x1-1/2", Gr. 2	4	F-1006-27	
54	Washer, Flat, Std, Steel, 3/8"	8	F-1009-03	
55	Locknut, Hx 3/8"-16 W/Nyloc	4	F-1239	
56	Capscrew, Hx, 1/2"-13x1, Gr. 2	3	F-1006-45	
57	Nut, Hx Znc Pltd, 1/2"-13, Stover	3	F-1005-05	
58	Stand, Horizontal Weldment	1	226-005W	
59	Capscrew, Hx, 3/8"-16x1-3/4"	2	F-1006-28	
60	Locknut, Hx, 3/8"-16 W/Nyloc	2	F-1239	
61	Nut, Hx Znc Pltd, 3/4"-10 Unc	4	F-1011-07	
62	Half Band, Stand	2	226-011P	
E	Horizontal Stand Sack	1	222-059A	
63	Capscrew, Hx, 3/8"-16x1, Gr. 2	10	F-1006-25	
64	Locknut, Hx 3/8"-16 W/Nyloc	8	F-1239	
65	Key	1	See Chart	
66	Pulley, 3 Groove	1	See Chart	
67	Belt, COG AX-60	3	D-3003-12	
68	Vertical Belt Shield Assembly	1	237-038A	21
69	Bracket, Belt Shield	1	237-023P	
70	Clutch Cover	1	10-079P	
71	Blind Rivet, 3/16"D, .126 - .1250	2	F-1057	
72	Half Band Weldment, Earred	2	244-002W	

2 GROOVE PULLEY

O.D.	I.D.	KEY SIZE	ASSEMBLY NUMBER	PULLEY NUMBER	KEY NUMBER
2-1/2"	7/8"	3/16"	249H-001A	249H-004P	249Z-020F
2-1/2"	1-1/8"	1/4"	249I-001A	249I-005P	249Z-018F
3-1/4"	7/8"	3/16"	249J-001A	249J-006P	249Z-020F
3-1/4"	1-1/8"	1/4"	249K-001A	249K-007P	249Z-018F
3-1/4"	1-3/8"	5/16"	249L-001A	249L-008P	249Z-019F
4"	7/8"	3/16"	249M-001A	249M-009P	249Z-020F
4"	1-1/8"	1/4"	249N-001A	249N-010P	249Z-018F
4"	1-3/8"	5/16"	249O-001A	249O-011P	249Z-019F

3 GROOVE PULLEY

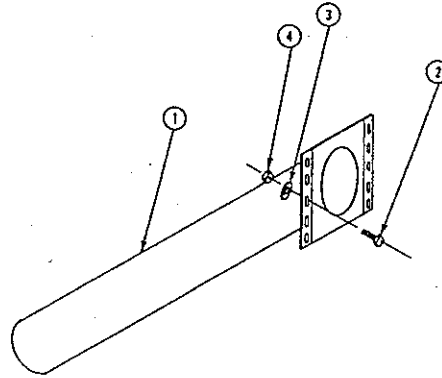
O.D.	I.D.	KEY SIZE	ASSEMBLY NUMBER	PULLEY NUMBER	KEY NUMBER
2-1/2"	1-1/8"	1/4"	249A-001A	249A-023P	249Z-018
3-1/4"	1-1/8"	1/4"	249B-001A	249B-012P	249Z-018
3-1/4"	1-3/8"	5/16"	249C-001A	249C-013P	249Z-019
4"	1-1/8"	1/4"	249D-001A	249D-014P	249Z-018
4"	1-3/8"	5/16"	249E-001A	249E-015P	249Z-019
4-1/2"	1-1/8"	1/4"	249F-001A	249F-002P	249Z-018
4-1/2"	1-3/8"	5/16"	249G-001A	249G-003P	249Z-019
3-1/2"	1-1/8"	1/4"	249P-001A	249P-016P	249Z-018
3-1/2"	1-3/8"	5/16"	249Q-001A	249Q-017P	249Z-019
3-3/4"	1-3/8"	5/16"	249R-001A	249R-021P	249Z-019



DOWNSPOUT WELDMENT

CORYDON, IOWA

ITEM	DESCRIPTION	QTY	PART NO.
1	Downspout Weldment	1	395-015W
2	Capscrew, Hx, 3/8"-16 x 1, Gr. 2	10	F-1006-25
3	Washer, Flat, Std, Steel, 3/8"	10	F-1009-03
4	Locknut, Hx, 3/8"-16 W/Nyloc	10	F-1239



8" TUBE WELDMENT

(395-010W) - (395-012W)

ITEM	DESCRIPTION	PART NO.	LENGTH
1	Tube Weldment, Short	395-010W	14'9-7/8"
1	Tube Weldment, Medium	395-011W	17'5-7/8"
1	Tube Weldment, Tall	395-012W	20'1-7/8"

