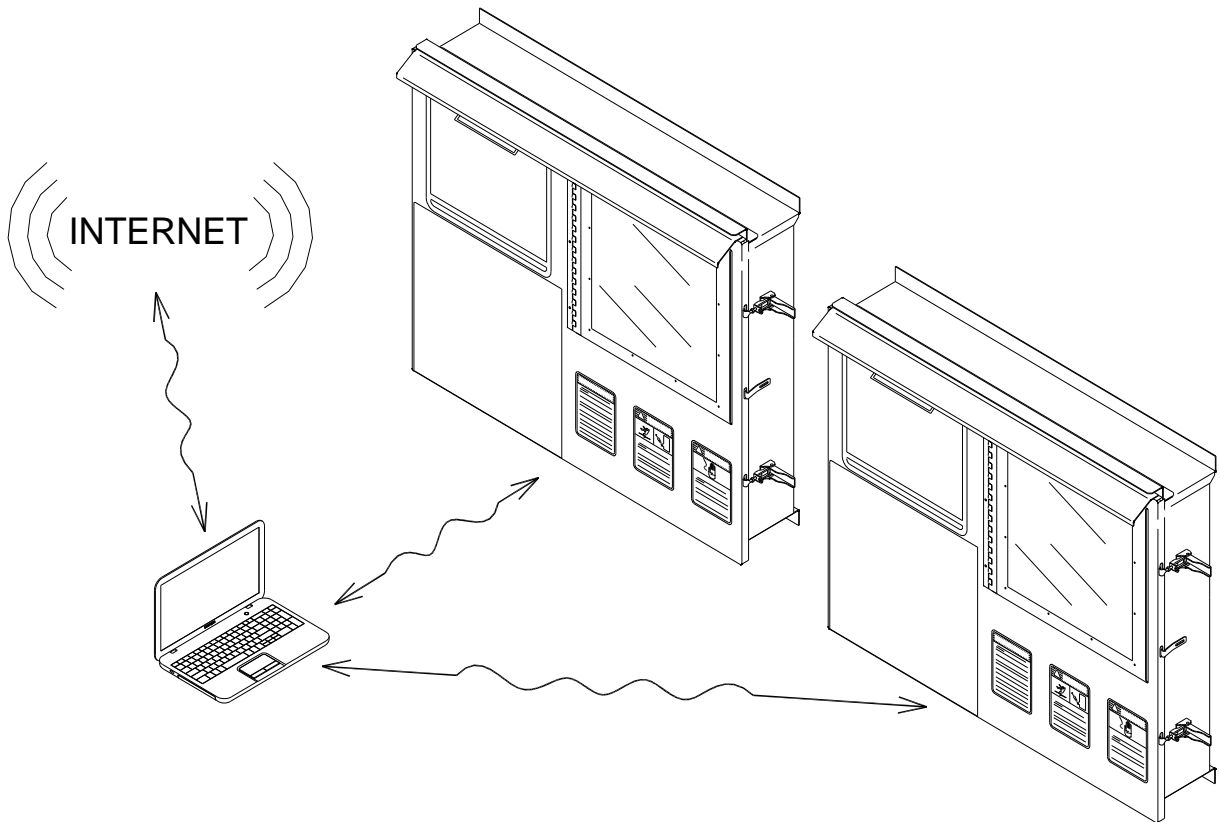
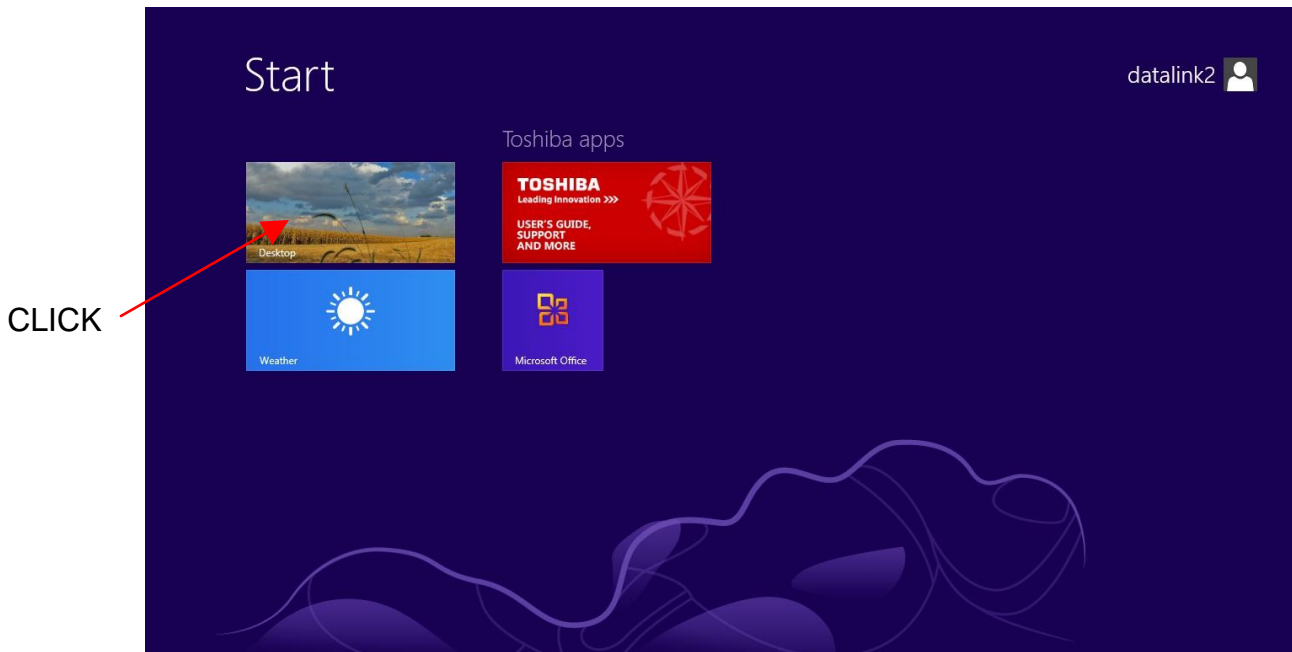




ADDENDUM INSTRUCTIONS FOR DUAL INPUT DATALINK



First, plug in the rs232 adapters. One in the left usb port and one in the right rear usb port. They are labeled and cannot be interchanged. When starting the Datalink for the first time, it will automatically sign into the Datalink2 account.



From here, click the desktop tile and wait for the programs to startup.



Looking at the icon in the toolbar, you can see that there are actually 2 Datalinks running directly on top of each other. Rearrange them to fit your needs.



If the 232 adapters were switched, both of the Datalinks will throw errors. You can either switch the adapters or switch the com ports in both of the programs. This is why the adapters are marked and need to be kept in the same usb port.



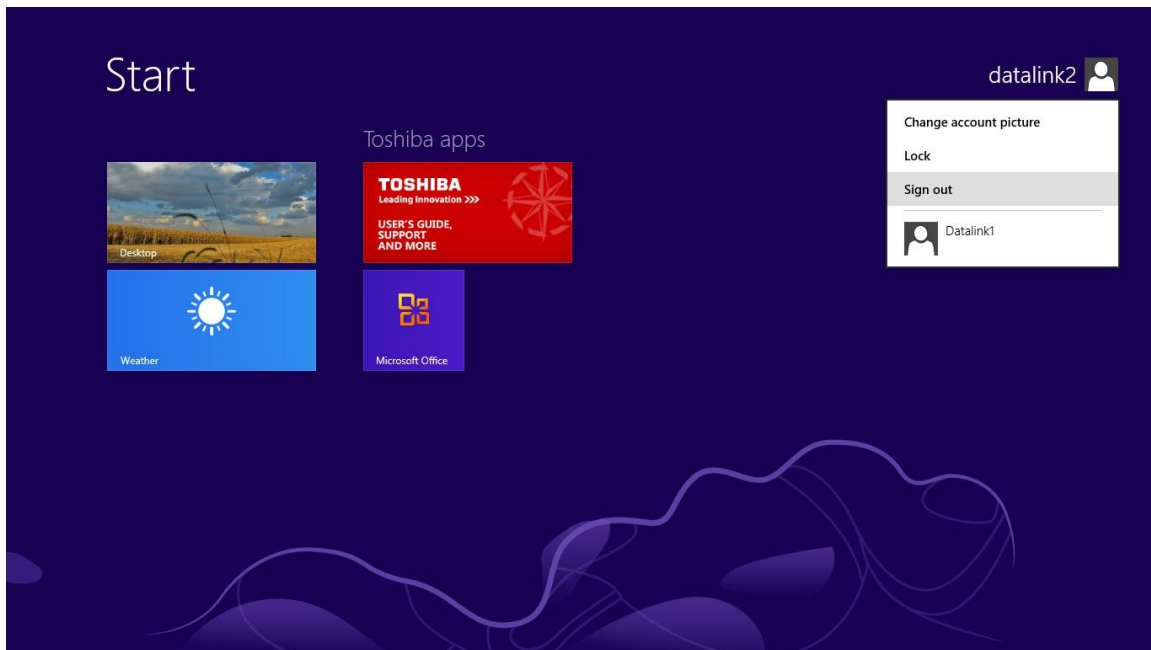
To access the data from the Datalinks, click on the corresponding folder on the desktop, Datalink1 files for LINK1 and Datalink2 files for LINK2.

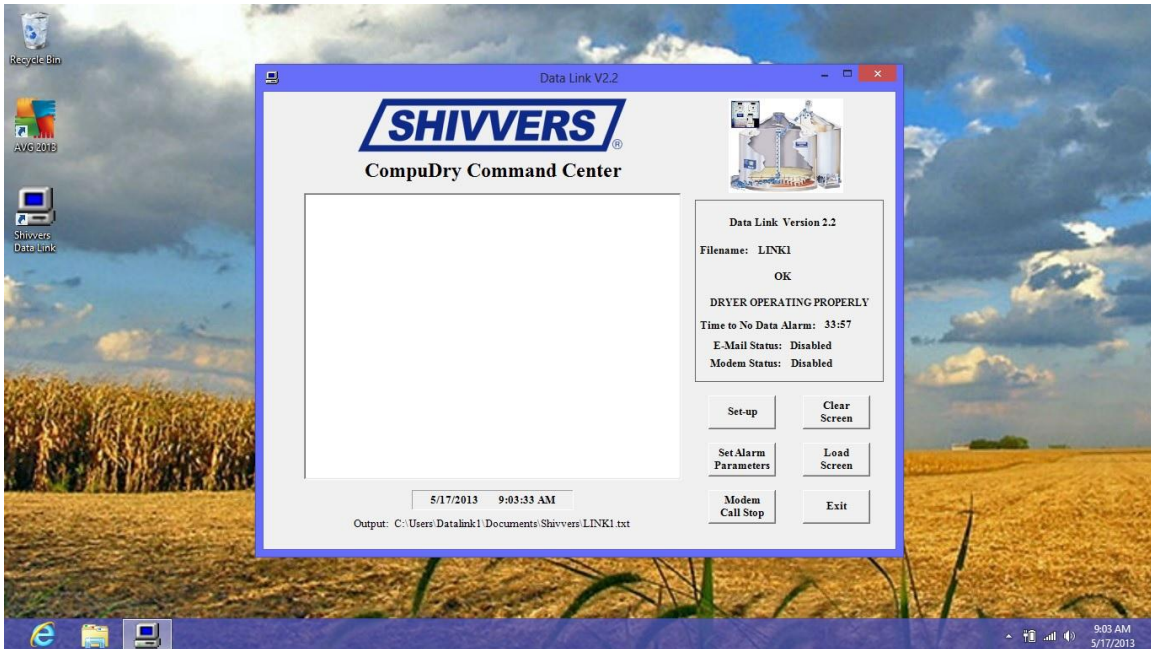
Generally LINK1 will be the adapter on the left and LINK2 on the right.

RUNNING ONE DATALINK INSTEAD OF TWO

If you would like to only startup one Datalink instead of two, you can either close one of the Datalinks or sign out of the Datalink2 account and sign into the Datalink1 account. It is probably easiest to just close one of the Datalinks.

To sign out of Datalink2 and sign into Datalink1, the default password for the Datalink1 account is “1234”.





All data recorded will be saved to the LINK1 file and any changes made to Datalink1 in this account will carry over to LINK1 in the Datalink2 account. For example if an alarm setting is changed in the Datalink1 account, it will be carried over to LINK1 in the Datalink2 account also.

If the computer is shutdown from the Datalink1 account, it will automatically try to log into Datalink1 the next time it is started.

TO RETURN TO THE DATALINK2 ACCOUNT

Press the windows button on the keyboard and click on “Datalink1” in the top right corner. In the drop down click “sign out”, then click on the Datalink2 profile. After login, both Datalinks should start up with no problems, unless the com ports were changed.