



**INSTALLATION
INSTRUCTIONS
FOR
10" JUMPSTER**

SHIVVERS MANUFACTURING, INC.
614 W. ENGLISH STREET
CORYDON, IA 50060
PH: 641-872-1005
FAX: 641-872-1593
www.shivvers.com

P-13509
REV A
2/21/2023

SAFETY

The operator of this machinery must assume the responsibility for his own safety, and that of those who are working with him. He must also make sure the equipment was installed properly. Factors that contribute to the overall safety of operation are: proper use, maintenance, and frequent inspection of the equipment. All of these are the operator's responsibility.

If any items covered in this manual are not completely understood, or there is a concern with the safety of the product, contact Shivvers Mfg. Inc. at the address shown on the front page.

Shivvers is genuinely interested in providing the safest practical equipment to our customers. If you have a suggestion which you believe will enhance the safety of this product, please write us and let us know.



TAKE NOTE ANYTIME THIS SAFETY ALERT SYMBOL APPEARS. YOUR SAFETY, AND THAT OF PERSONS AROUND YOU IS AT STAKE.

The safety alert symbol will be accompanied by one of three signal words whose definitions are given as:

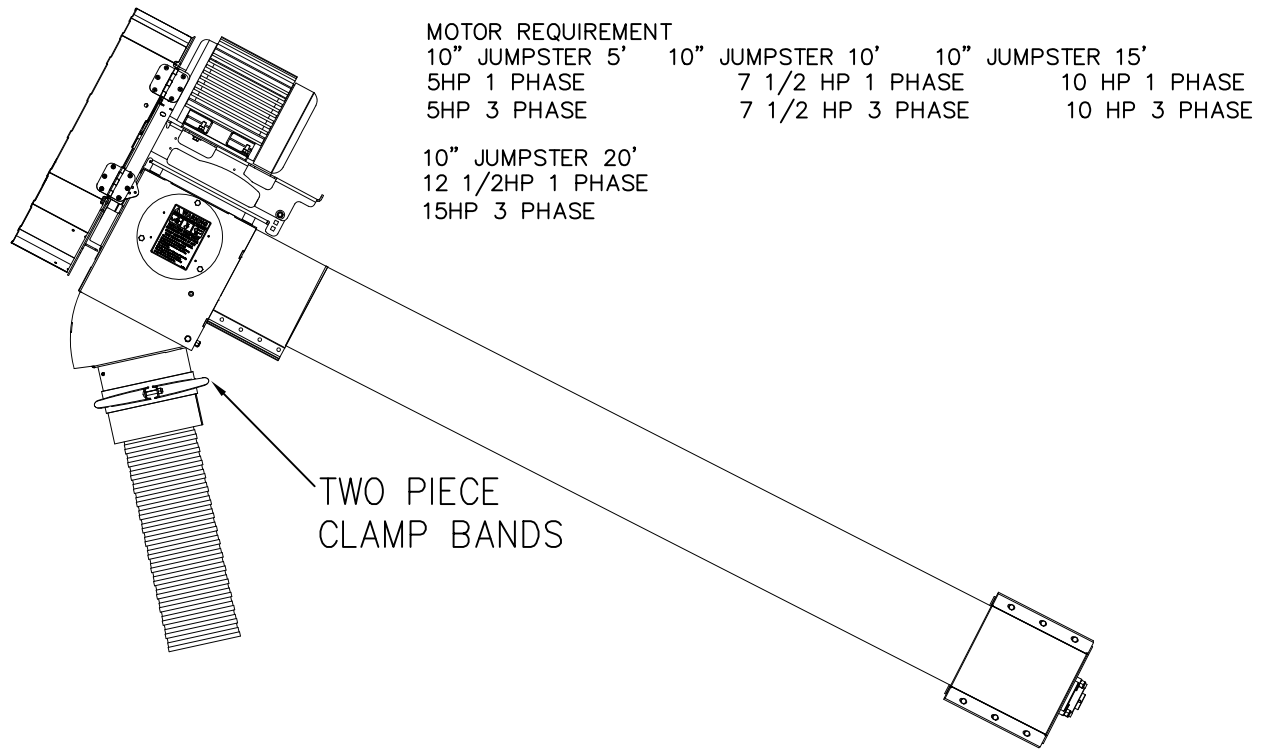
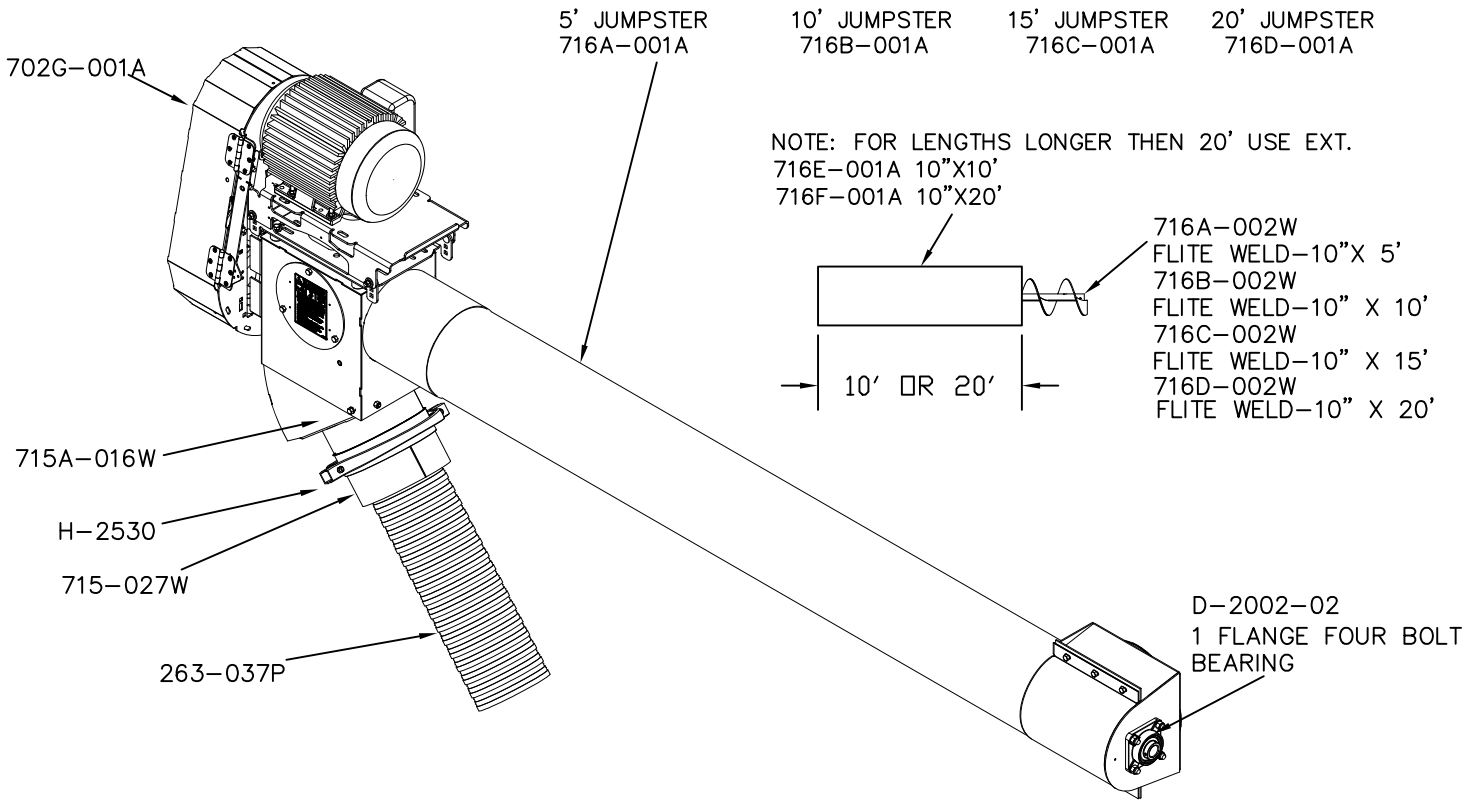
DANGER: Red and white. Indicates an imminently hazardous situation that, if not avoided, will result in death or serious injury. This signal word is to be limited to the most extreme situations, typically for machine components that, for functional purposes, cannot be guarded.

WARNING: Orange and black. Indicates a potentially hazardous situation that, if not avoided, could result in death or serious injury, and includes hazards that are exposed when guards are removed. It may also be used to alert against unsafe practices.

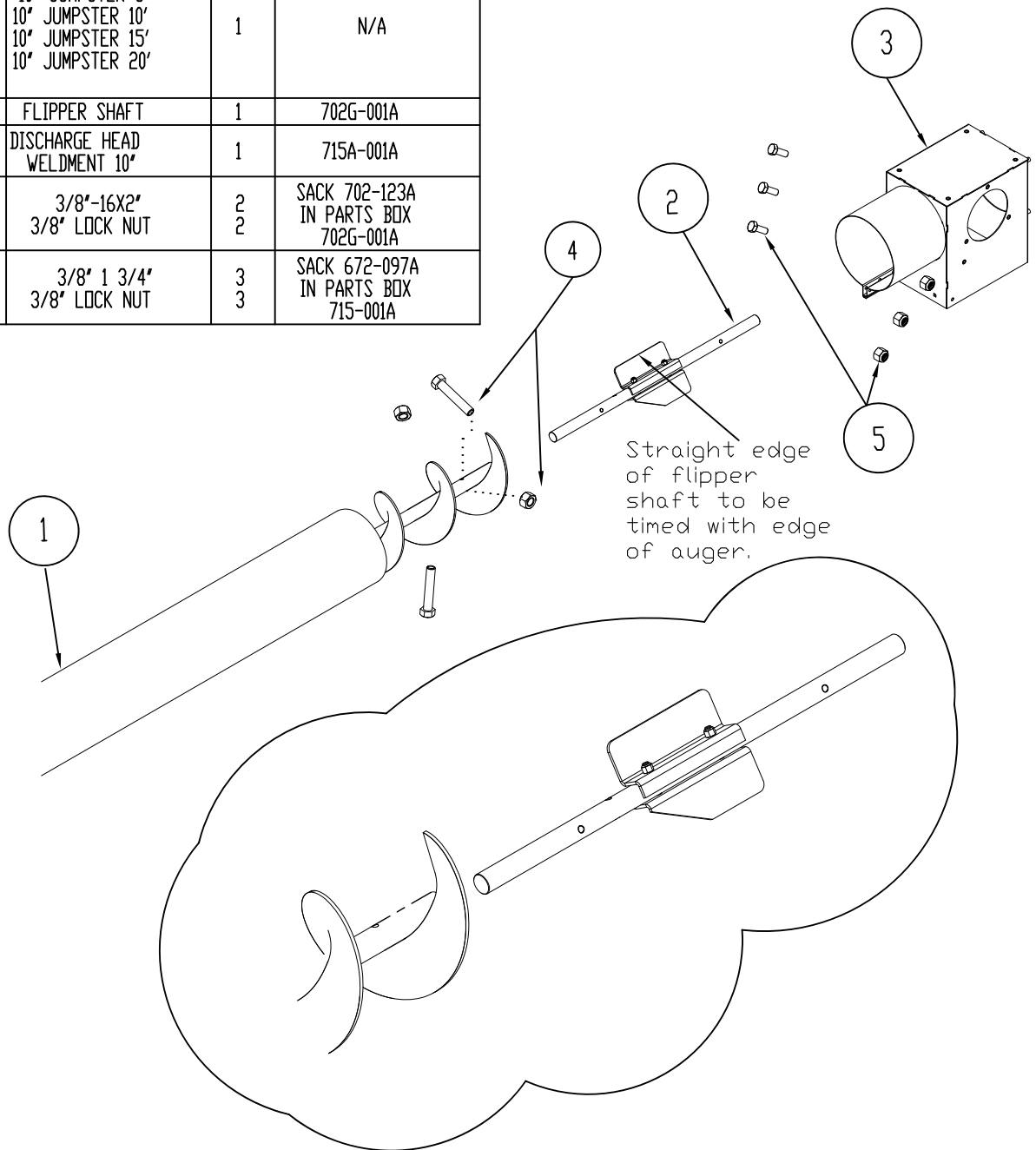
CAUTION: Yellow and black. Indicates a potentially hazardous situation that, if not avoided, may result in minor or moderate injury. It may also be used to alert against unsafe practices.

Anytime you are working with your drying unit, be sure to observe these common sense rules:

- 1). All units must be equipped with a main power disconnect switch. This disconnect switch must shut power off to the complete drying system. It must have the capability of being locked into the OFF or OUT position. Disconnect and **LOCK OUT** this main power disconnect switch before conducting any inspection, maintenance, repair, adjustment, or cleaning of the drying system. When you must have the electrical power on to troubleshoot equipment, do it from a safe distance, and always from outside the bin.
- 2). Keep the bin entrances locked at all times. To unlock the bin, first lower the Level-Dry (if so equipped), then shut the main power disconnect off. Take the safety lock off the bin entrance and place it on the main power disconnect before opening the bin entrance. **Never enter the drying bin unless the Level-Dry (if so equipped), is completely lowered, and all power is disconnected and locked out.**
- 3). Always keep all shields and guards in place. If shields or guards must be removed for inspection or maintenance, replace them before unlocking and turning the power back on.
- 4). Be sure everyone is clear of all the drying and transferring equipment, and outside of all bins, before unlocking and turning the power on. Some equipment may run upon re-application of power.
- 5). Make sure that all decals are in place and are easy to read. Do not operate the equipment with missing or illegible decals. If replacements are needed, contact Shivers Mfg, Inc. or your dealer.
- 6). Prior to use, inspect all equipment to insure that it is in good operating condition. Do not operate with missing, damaged, or worn parts. Use only Shivers approved replacement parts.
- 7). Metal edges can be sharp. Wear protective clothing and handle equipment and parts with care.
- 8). Keep children and bystanders away from drying and transferring equipment at all times.
- 9). If going up the bin ladder and/or performing maintenance on the top of the bin, take precautions to prevent accidental falls. When on top of the bin, wear a safety harness or other safety device.
- 10). At least annually, review all operating and safety manuals with any personnel working with this equipment. Always train new employees before they operate the drying equipment. Insist that they read and understand the operating and safety manuals.



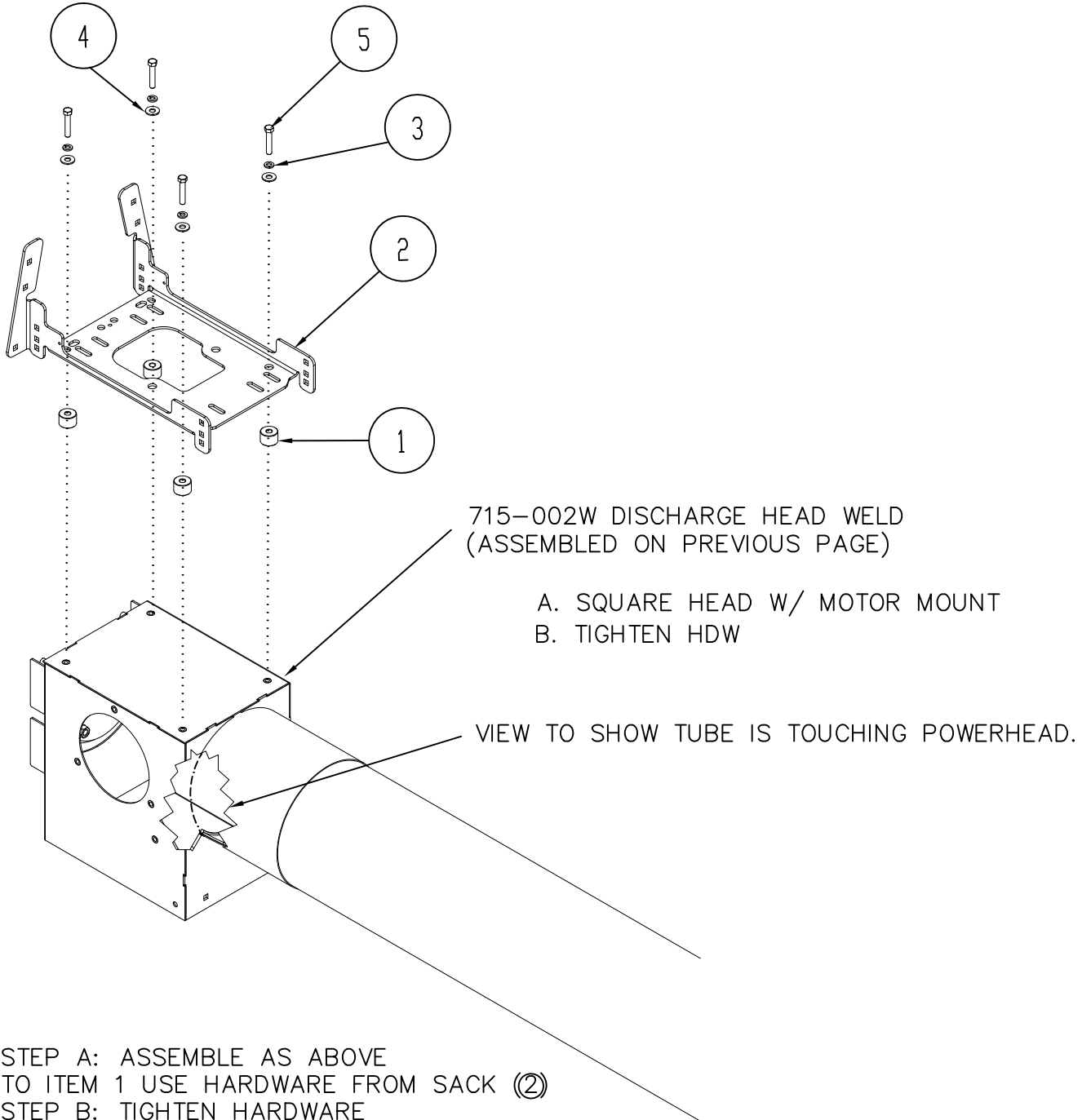
ITEM NO.	PART NO.	DESCRIPTION	QTY.	PARTS BOX/ SACKS
1	716A-001A B 001A C 001A D 001A	10" JUMPSTER 5' 10" JUMPSTER 10' 10" JUMPSTER 15' 10" JUMPSTER 20'	1	N/A
2	702-167A	FLIPPER SHAFT	1	702G-001A
3	715-002W	DISCHARGE HEAD WELDMENT 10"	1	715A-001A
4	F-1073 F-1005-03	3/8"-16X2" 3/8" LOCK NUT	2 2	SACK 702-123A IN PARTS BOX 702G-001A
5	F-1528 F-1239	3/8" 1 3/4" 3/8" LOCK NUT	3 3	SACK 672-097A IN PARTS BOX 715-001A



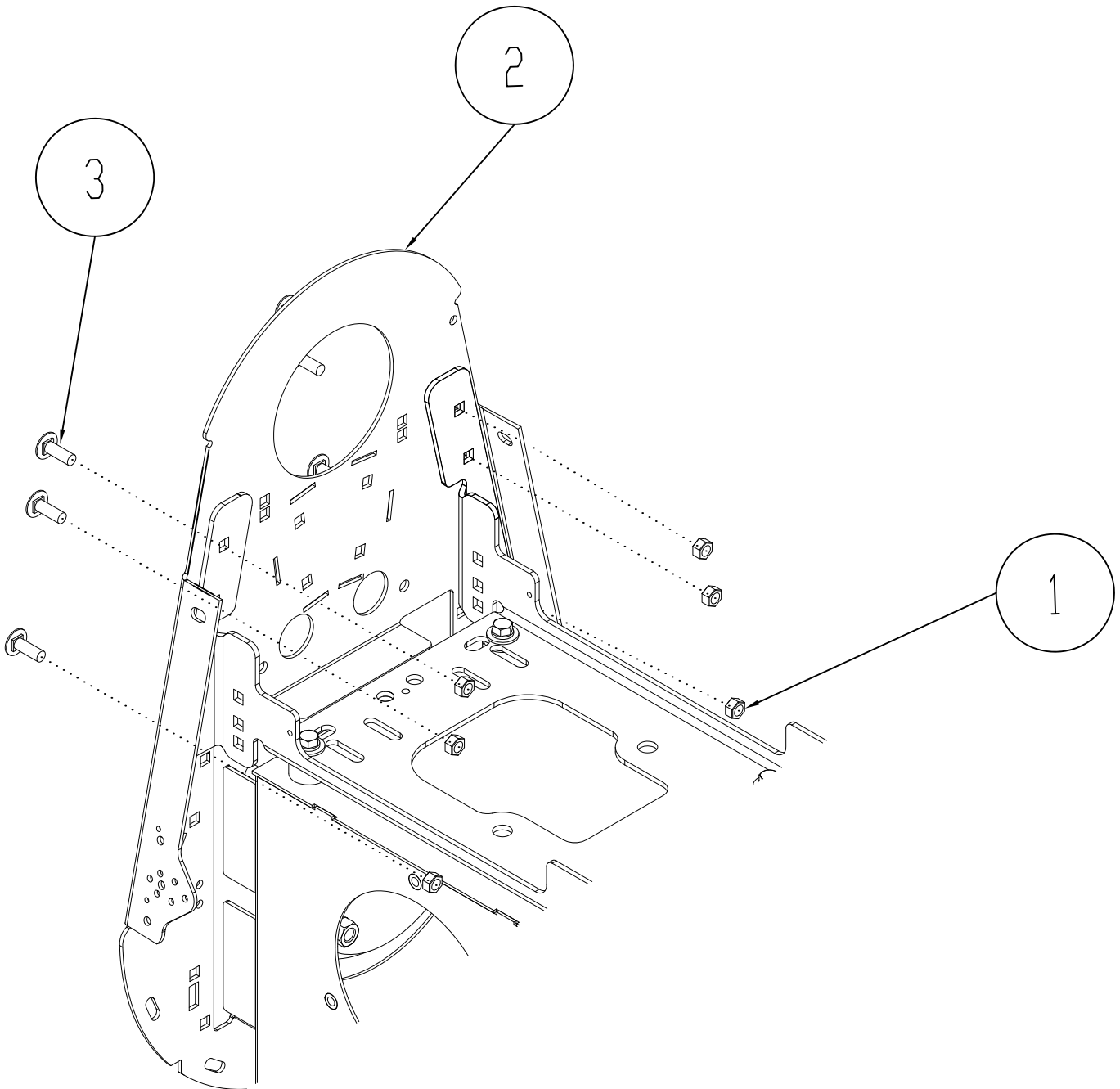
ASSEMBLY (FIELD)

- A. LINE UP JUMPSTER INLET W/ HORIZONTAL OUTLET (1)
- B. ASSEMBLE (2) FLIPPER SHAFT INTO END OF AUGER; MAKE SURE FLIPPER LINES UP W/ END OF FLITE. USE HDW (4) TO TIGHTEN SECURELY.
- C. SLIDE (3) DISCHARGE HEAD OVER FLIPPER SHAFT (2) AND THEN OVER AUGER END AND TUBE. MAKE SURE (3) IS OUTSIDE OF THE TUBE AND BOTTOMS OUT ON THE INSIDE SLEEVE OF DISCHARGE HEAD.
- D. USING HDW (5) INSTALL IN SLEEVE MAKE SURE (3) DISCHARGE HEAD IS POINTED IN DESIRED DIRECTION. TIGHTEN HARDWARE.

ITEM NO.	PART NO.	DESCRIPTION	QTY.	PARTS BOX/ SACKS
1	702-112P	SPACER, MOTOR MOUNT	4	FOUND IN SACK 702-114A IN PARTS BOX 702G-001A
2	702-106P	CFTA/QRPH: BASE BRACKET, JUMPSTER	1	FOUND IN PARTS BOX 702G-001A
3	F-1019-03	199 LOCKWASHER, 3/8 HVY SPRING YELLOW PLATED/HEAVY HELICAL SPRING TYPE	4	FOUND IN SACK 702-114A IN PARTS BOX 702G-001A
4	F-1009-03	199 WASHER, FLAT, STD, STEEL 3/8" W SERIES; .438 ID (+.015-.005) 1.000 OD (+.030-.007) .064 TO .104 THK 1/98 YELLOW	4	
5	F-1073	199 CAPSCREW, HX, 3/8-16 X 2, G5 HEATED TREATED STEEL, PLATED	4	



ITEM NO.	PART NO.	DESCRIPTION	QTY.	PART BOX / SACK
1	F-1233	FLANGE NUT,3/8-16 HEX,SERRATED	6	
2	702-110P	CFTA/QRPH: BELT DRIVE BACK PLATE (702G)	1	
3	F-1274	199 CARRIAGE BOLT,3/8-16X1*LG GR5 PLATED, GRADE 5	6	

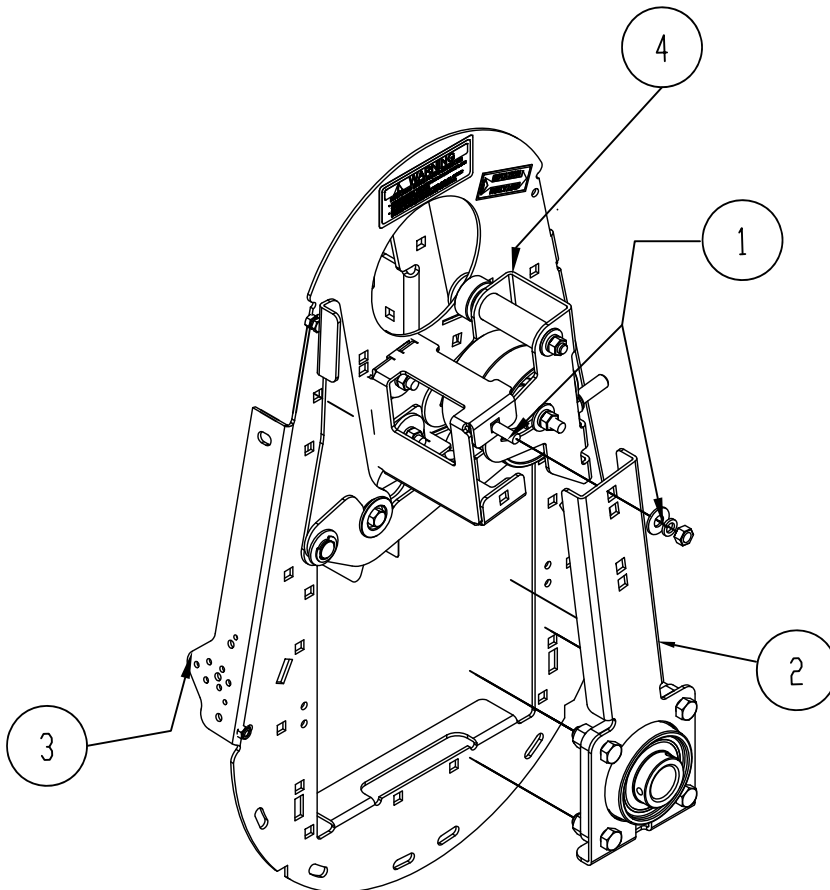


INSTALLATION INSTRUCTIONS FOR 702G SERIES POWERHEAD

STEP 1:

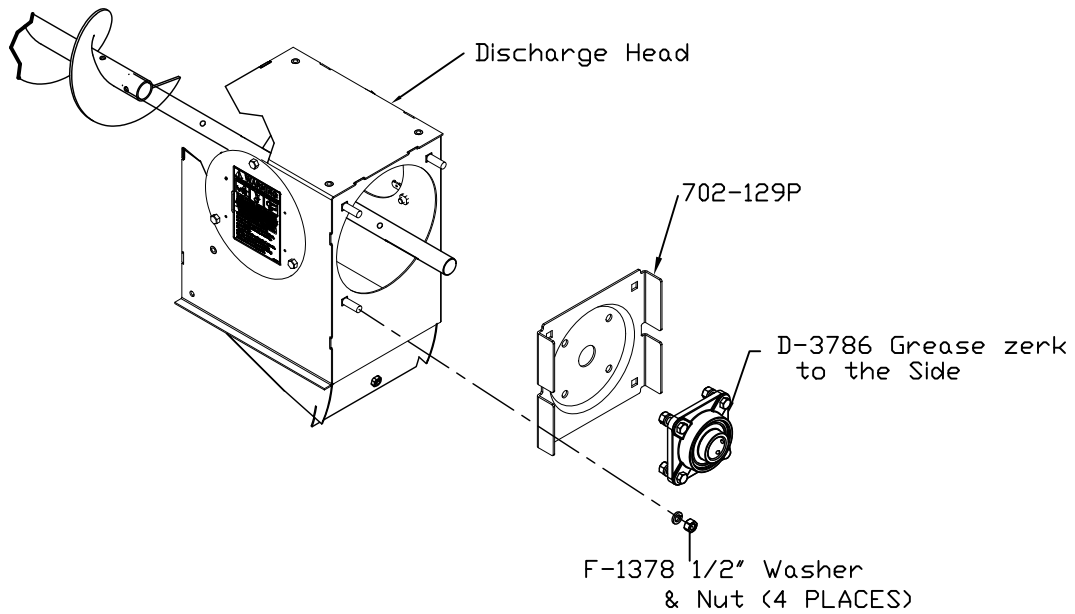
REMOVE DRIVE ASSEMBLY WITH BELT SHIELD FROM CARTON 702G-001A. FASTEN BELT SHIELD BACK TO BASE BRACKET REMOVE OUTSIDE BEARING ARM ASSEMBLY, AS SHOWN.

ITEM NO.	PART NO.	DESCRIPTION	QTY.	PARTS BOX/SACKS
1	F-1274	3/8" X 1" CARRIAGE BOLT	2	
	F-1009-03	3/8" WASHER	2	
	F-1019-03	3/8 LOCKWASHER	2	
	F-1011-03	3/8 PLAIN NUT	2	
2	702-115P	QRPH/CFTA/ UNIVERSAL BEARING MOUNT ARM, RH	1	
3	702-110P	CFTA/QRPH: BELT DRIVE BACK PLATE (702G)	1	
4	702G-001A	QRPH POWERHEAD 6' BOXED	1	

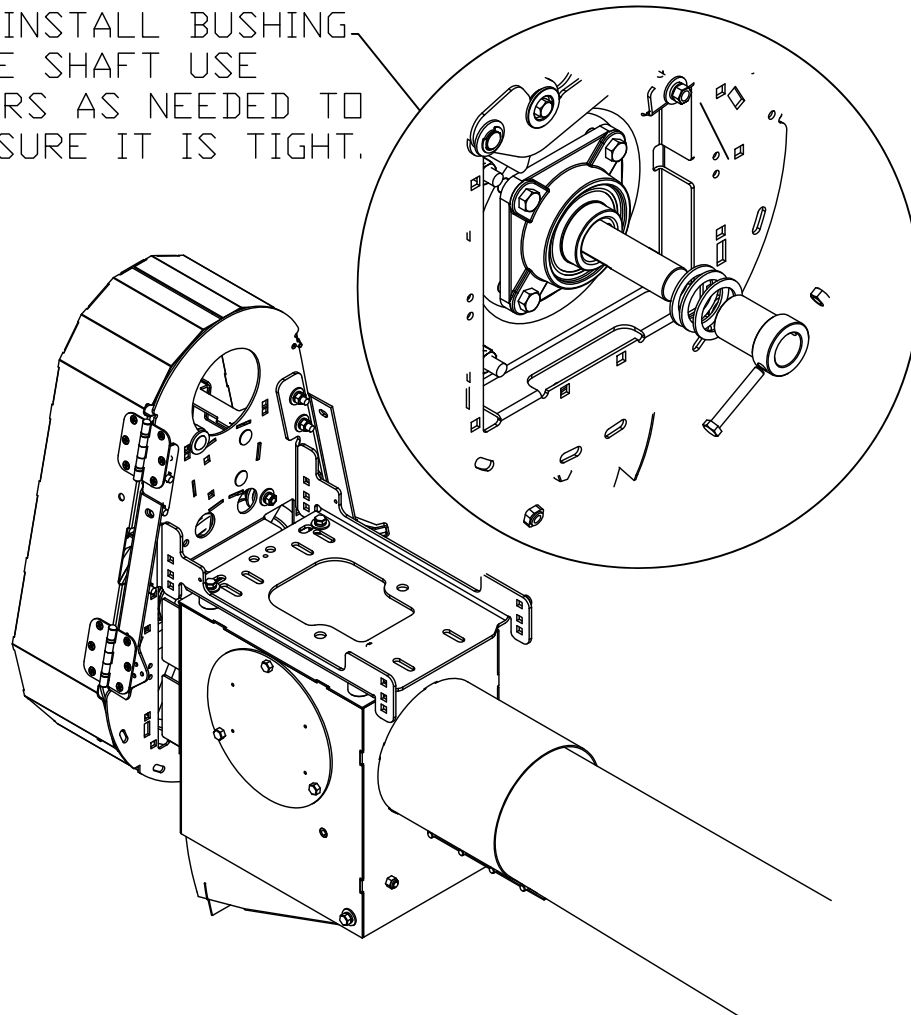


STEP 2:

Install bearing assembly onto bolts on discharge head, making sure that the grease zerk is faced to the side. New nuts and washers are in the flipper shaft hardware sack.

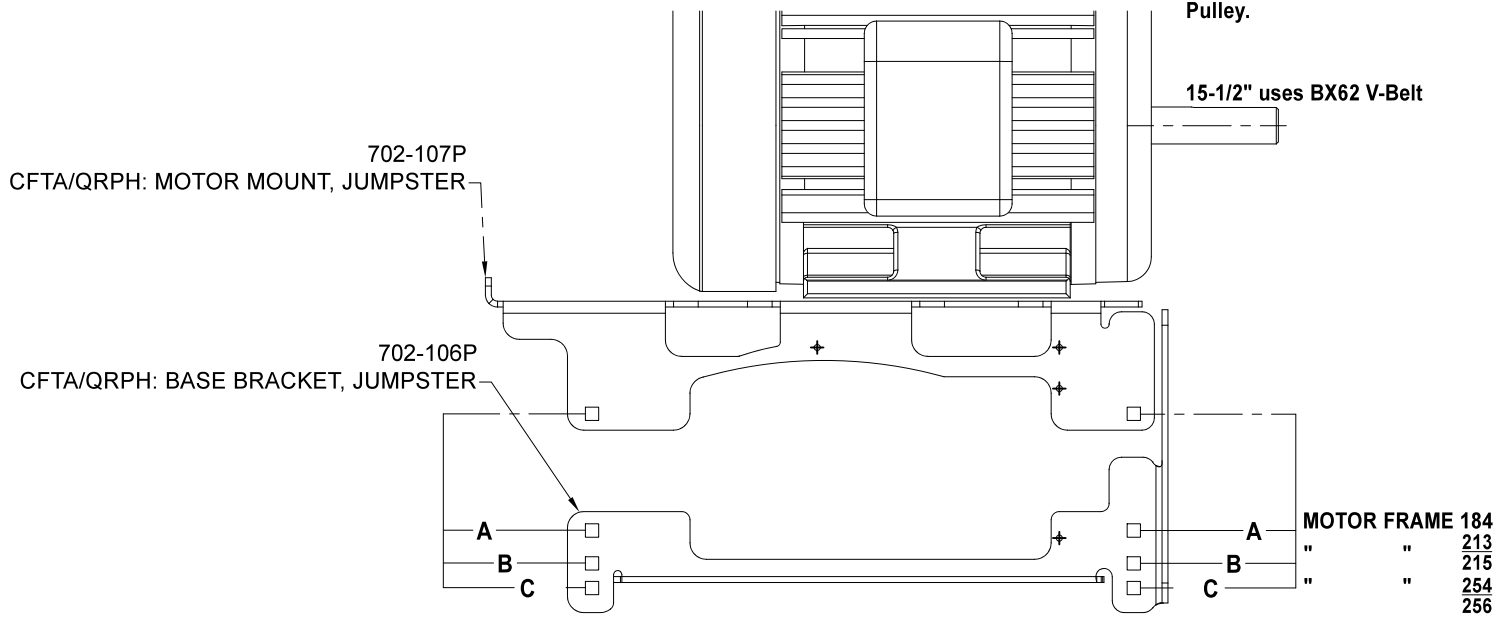


NOTE: INSTALL BUSHING ON THE SHAFT USE WASHERS AS NEEDED TO MAKE SURE IT IS TIGHT.



Shivvers Jumpster, 10" Motor Mount Setting Chart

NOTE: Measure
Centerline of Drive Pulley
to Centerline of Driven
Pulley.



JUMPSTER DIAMETER, INCHES	10
AUGER SPEED, RPM	465

SINGLE PHASE

Motor HP	Motor Shaft Centerline	Motor Frame	Mount Setting
5	5.25	215T	B
7-1/2	5.25	213T	B
10	5.25	215T	B
12-1/2	5.25	215T	B

THREE PHASE

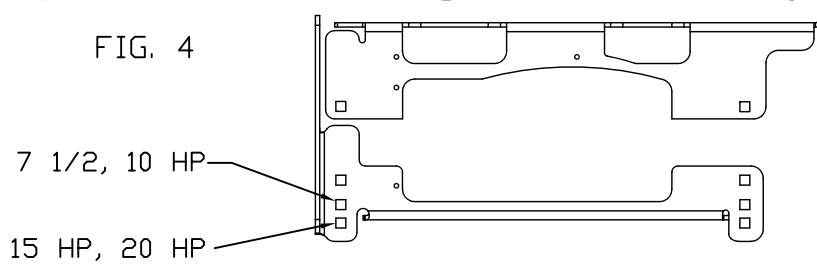
Motor HP	Motor Shaft Centerline	Motor Frame	Mount Setting
5	4.5	184T	A
7-1/2	5.25	213T	B
10	5.25	215T	B
15	6.25	254T	C
20	6.25	256T	C

Incline Angle	0 Degrees							
Length, FT	10	15	20	30	40	50	60	
Motor, HP	3	5	7.5	10	12.5 1P/ 15 3P	15	20	
Incline Angle	25 Degrees							
Length, FT	10	15	20	30	40	50	60	
Motor, HP	5	7.5	10	12.5 1P/ 15 3P	20	20	25	
Incline Angle	35 Degrees							
Length, FT	10	15	20	30	40	50	60	
Motor, HP	5	7.5	10	12.5 1P/ 15 3P	20	25	25	
Incline Angle	45 Degrees							
Length, FT	10	15	20	30	40	50	60	
Motor, HP	5	7.5	10	12.5 1P/ 15 3P	20	25	25	
Incline Angle	90 Degrees							
Length, FT	10	15	20	30	40	50	60	
Motor, HP	5	5	7.5	10	15	20	20	

STEP 4:

Using Fig. 4 below, determine which motor mount holes should be used, then install 702-107P motor mount to powerhead/discharge head assembly in appropriate holes.

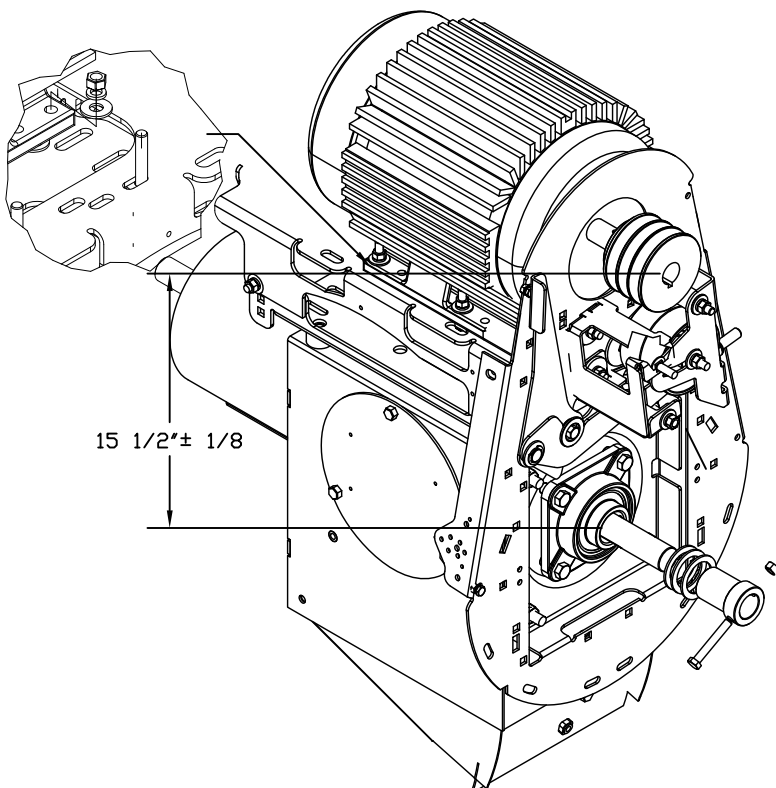
FIG. 4



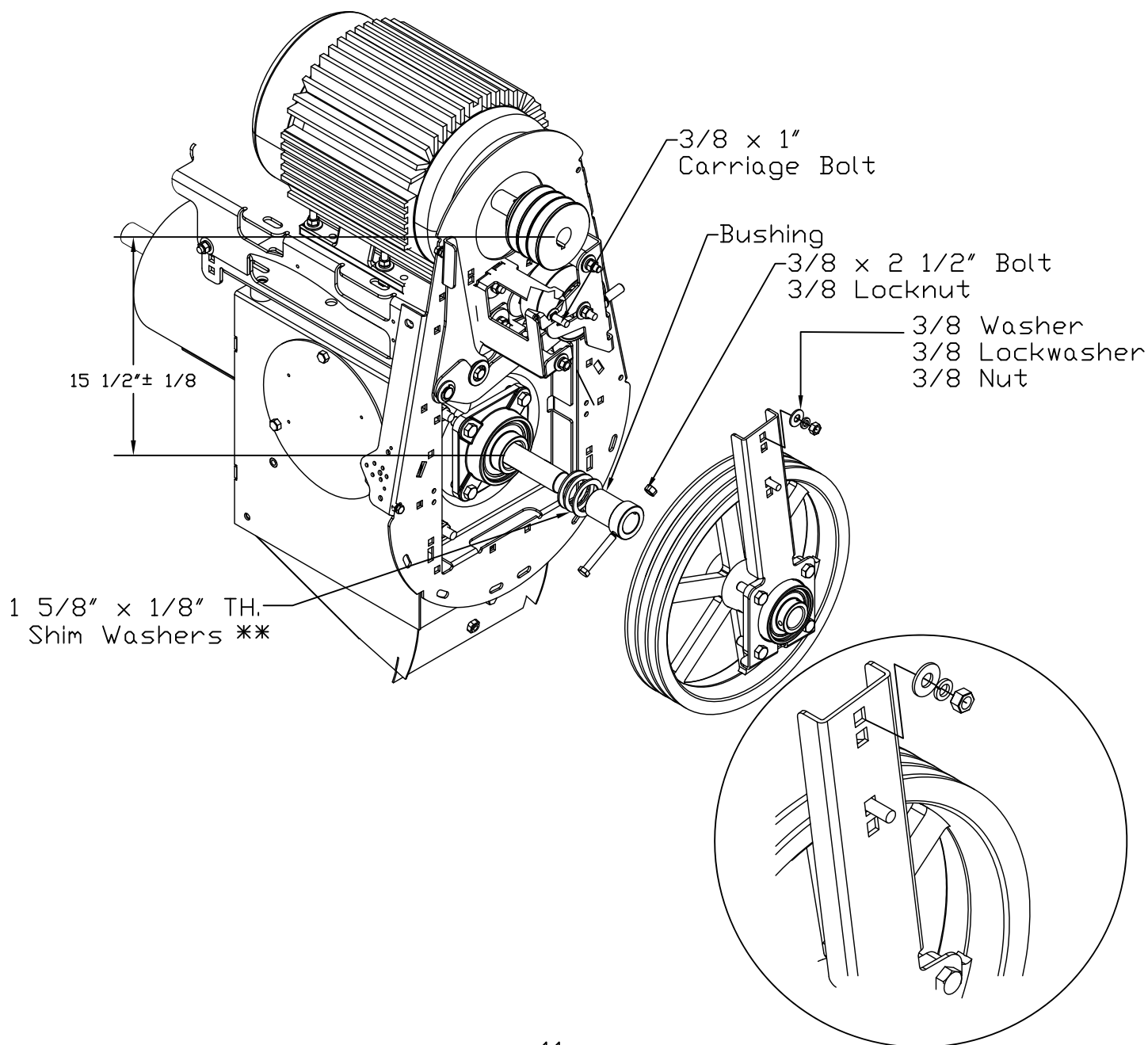
STEP 5:

Using a winch or lift, fasten motor to motor mount. Verify that the center distance between the motor shaft and the auger shaft is $15\text{-}1/2" \pm 1/8"$.

Reposition if necessary. Install 4", 3 groove AB Pulley onto motor shaft.

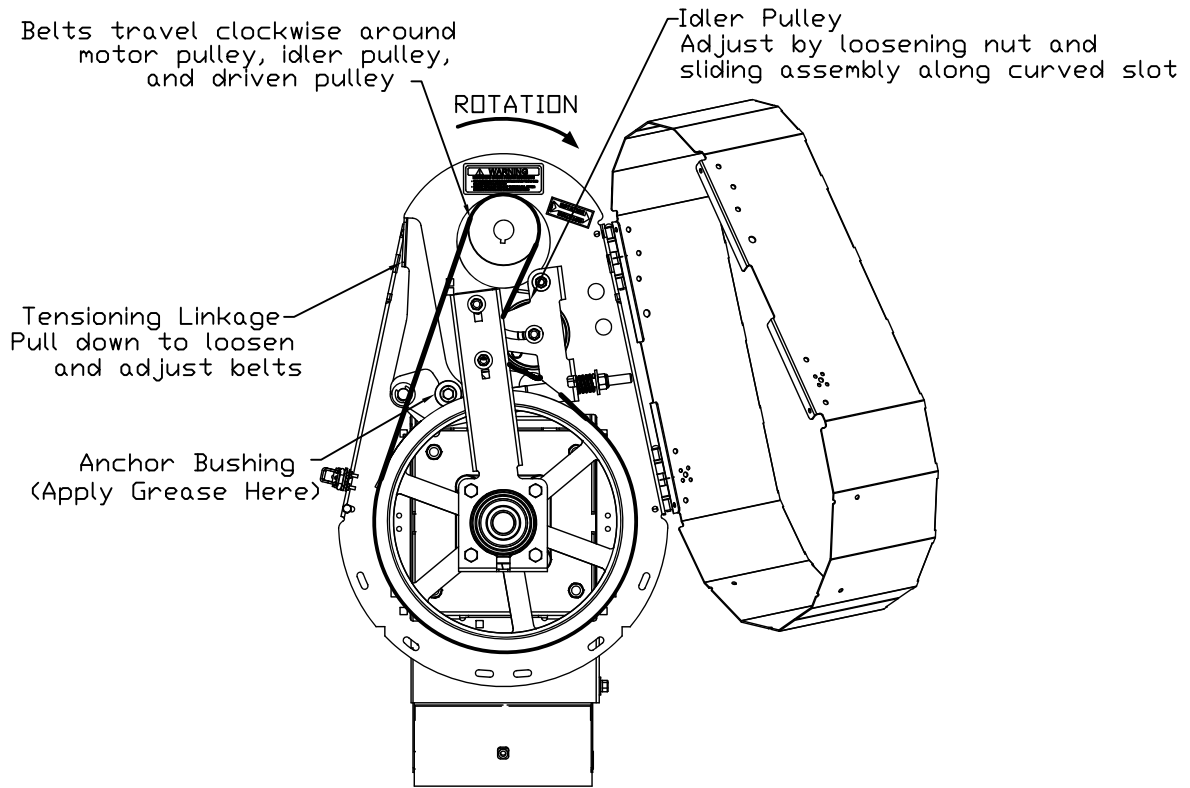


Install bushing onto shaft, insert 3/8" x 2-1/2" bolt thru bushing and hole in shaft and tighten 3/8" locknuts. Install 1/4" x 1/4" x 2-3/4" key onto shaft then install 15" 3AB aluminum pulley (long end of hub out). (Use Upper Hole). You might need to use a drift to align arm with flipper shaft. Align pulleys with 1-1/8" to 1-1/4" between the backplate and the back of the pulleys and leave set screws. Loosen until belts are installed.



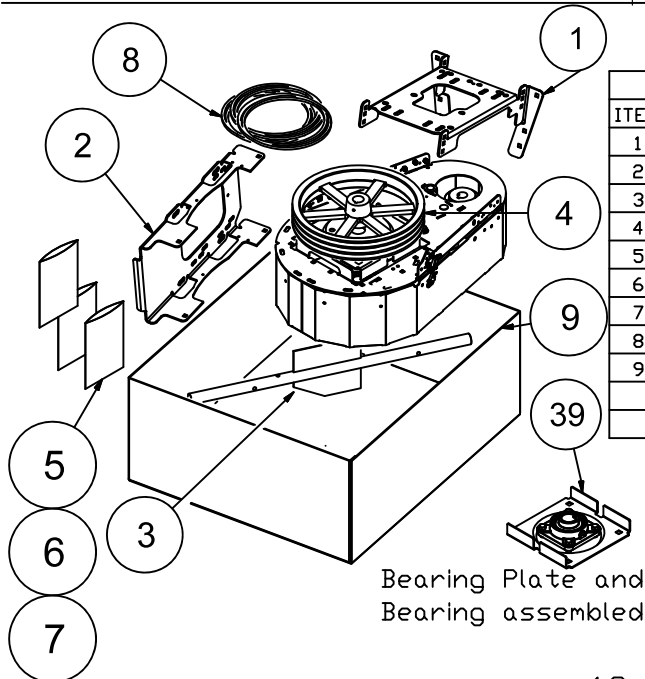
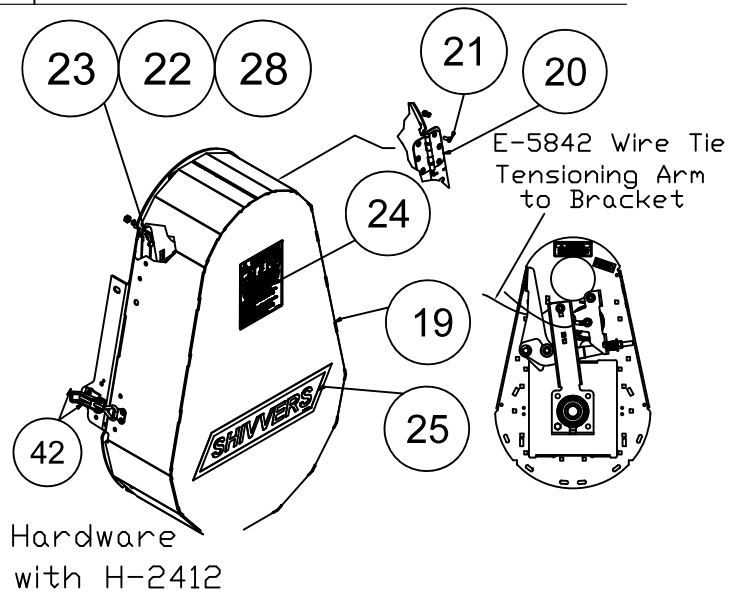
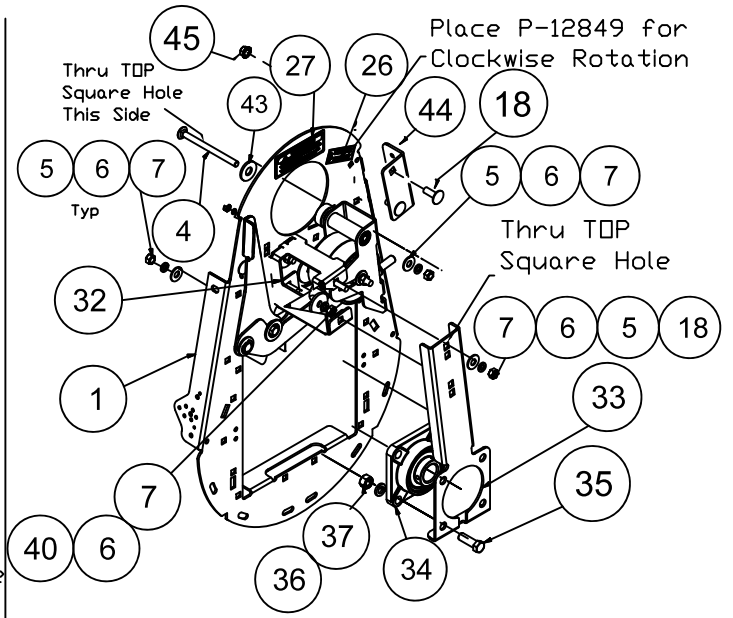
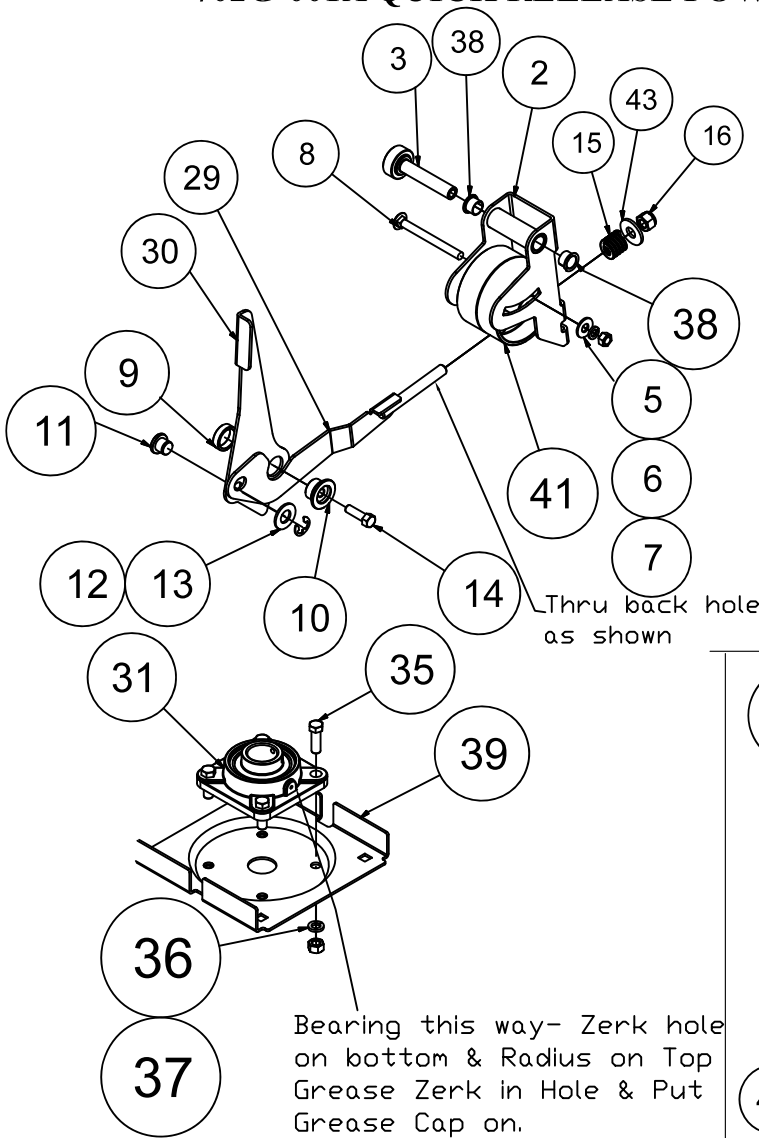
STEP 6:

Pull tensioning linkage down, then install the (3) BX62 V-Belts for 702G. Adjust pulleys so belts are aligned straight and tighten setscrews. Adjust idler & tensioning linkage to tighten V-Belts. Inspect clearance between the pulley and the linkage. If necessary, re-adjust idler position and tensioning linkage to provide the necessary clearance. Apply some grease to the Tensioning Linkage where it contacts the Anchor Bushing to prevent wear. Tensioning linkage must be in up position (as shown) to shut belt shield and operate. Shut belt guard to make sure it shuts (and opens) properly.



Open the belt guard. Make sure no one is near pulleys. Turn on the power supply. Switch motor ON to verify the motor is turning the proper direction (Clockwise). Adjust to clockwise rotation if necessary. While the motor is ON, verify the V-Belts are aligned. Turn OFF motor, and fasten belt guard securely with its latch. All wiring is done by licensed electrician.

702G-001A QUICK RELEASE POWERHEAD, 10" JUMPSTER



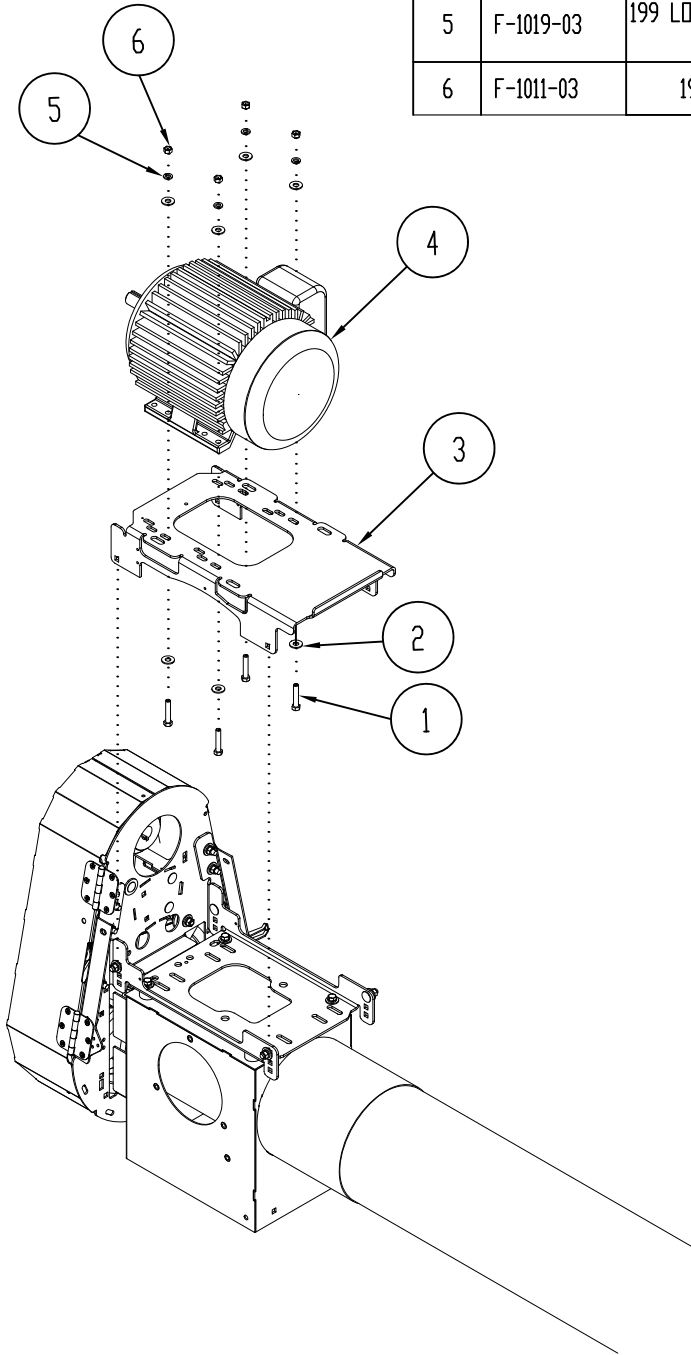
Parts List			
ITEM	QTY	PART NUMBER	DESCRIPTION
1	1	702-106P	Base Bracket, Jumpster
2	1	702-107P	Motor Mount, Jumpster
3	1	702-167A	Long Flipper Shaft Assy
4	1	D-3837	3 Groove 15 x 1-1/4" Pulley
5	1	702-113A	Sack, Base Bracket Hdwe.
6	1	702-114A	Sack, Motor Mount Hdwe.
7	1	702-123A	Sack, Flipper Shaft
8	3	D-3863	V-BELT, POLYCORD BX62
9	1	B-2031, B-2076	Box, 30 x 20 x 9"
	2	B-2045	Box, 7 x 4 x 24"
	1	P-12975	Installation Instructions, 702G

Place #3 (Flipper Shaft) on Bottom and foam. Place small parts, including bearing plate inside belt shield. Place remaining parts as shown. Use (2) B-2045 Boxes folded as sides. Foam.

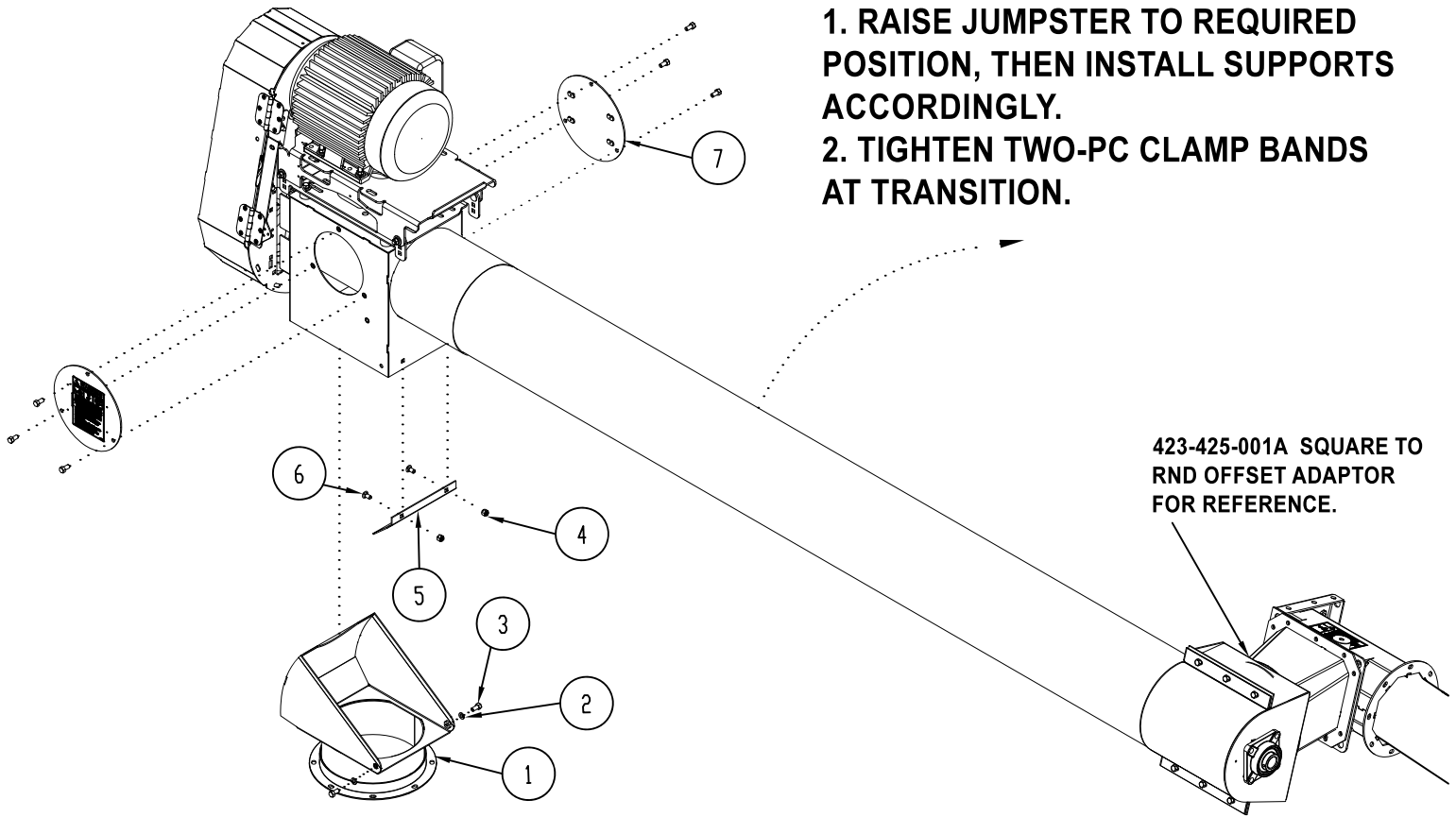
702G-001A QUICK RELEASE POWERHEAD, 10" JUMPSTER

Parts List			
ITEM	QTY	PART NUM.	DESCRIPTION
1	1	702-110P	QRPH Backplate
2	1	702-021W	QRPH Idler Arm Wldt.
3	1	702-024P	QRPH Idler Arm Pintle
4	1	F-2107	3/8-16 x 5" Carriage Bolt
5	5	F-1009-03	3/8" Flat Washer
6	7	F-1019-03	3/8" Lockwasher
7	7	F-1011-03	3/8-16 Hex Nut
8	1	F-2094	Carriage Bolt, 3/8-16 x 4"
9	1	702-034P	QRPH Tens. Arm Pivot Bushing
10	1	702-035P	QRPH Tensioning Arm Pivot
11	1	702-033P	QRPH Tensioning Arm Pin
12	1	F-1595	E-Ring
13	1	F-1940	Washer, Flat, 5/8
14	1	F-1307	3/8-16 x 1-1/4" Capscrew
15	1	H-2702	Die Spring, 1"OD x 1/2"ID x 1"L
16	1	F-1378	1/2" Ny-Locknut
18	4	F-1274	3/8-16 X 1" Carriage Bolt
19	1	702-059W	QRPH: Belt Shield Body
20	2	H-2712	Hinge, 3.5 x 3.5
21	12	F-2109	Screw, 1/4-20 x 3/4", Flat Head
22	14	F-1019-01	1/4" Lockwasher
23	14	F-1011-01	1/4-20 Plain Nut
24	1	P-10223	Decal, Warning Rot. Equip.
25	1	P-12827	Decal, SHIVVERS
26	1	P-12849	Decal, Rotation
27	1	P-10935	Decal, WARNING
28	2	F-1015-02	1/4-20 x 5/8" Capscrew
29	1	702-016W	QRPH: Tensioning Linkage
30	1	702-029P	QRPH:Tensioning Arm
31	1	D-3786	Bearing, 4-Bolt Flange, 1 5/8ID
32	1	702-121P	Bearing Mt. Brkt (Bolt-On) CW
33	1	702-115P	QRPH: Bearing Mount Arm
34	1	D-2002-02	Bearing, 4-Hole Flange 1-1/4 ID
35	8	F-1526	1/2-13 x1-1/2" Capscrew
36	12	F-1464	1/2" Lockwasher
37	12	F-1011-05	Hex Nut, 1/2-13
38	2	D-3730	DU Flanged Bushing
39	1	702-129P	Bearing Adapter For Jumpster
40	2	609-034P	Spindle Spacer Washer
41	1	702-147A	Flat Idler Pulley/Bearing Assembly
42	1	H-2412	Door Latch Kit
43	2	F-1009-05	1/2" Flat Washer
44	1	702-142p	Hinge Bracket
45	2	F-1233	Nut, Hex Washer Head, SERR: 3/8-16

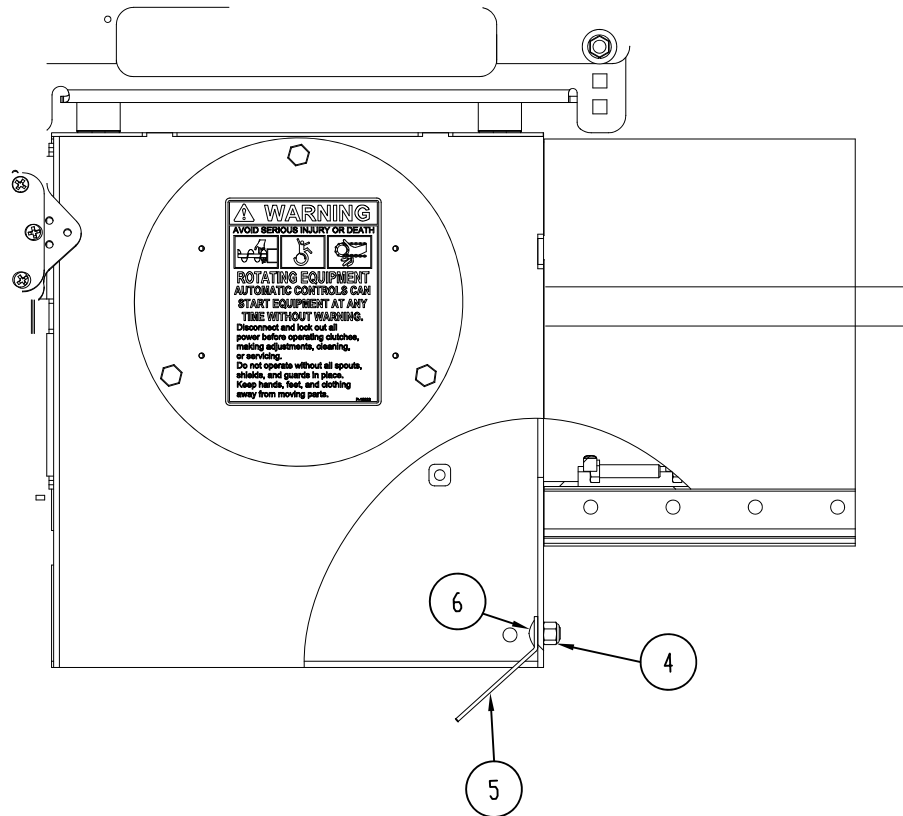
1	F-1073	199 CAPSCREW,HX,3/8-16 X 2, G5 HEATED TREATED STEEL, PLATED	4
2	F-1009-03	199 WASHER, FLAT, STD, STEEL 3/8" W SERIES; .438 ID (+.015-.005) 1.000 OD (+.030-.007) .064 THK 1/98 YELLOW	8
3	702-107P	CFTA/QRPH: MOTOR MOUNT, JUMPSTER	1
4	-	MOTOR	1
5	F-1019-03	199 LOCKWASHER, 3/8 HVY SPRING YELLOW PLATED/ HEAVY HELICAL SPRING TYPE	4
6	F-1011-03	199 NUT, HEX 3/8-16 UNC-2B YELLOW PLATED	4



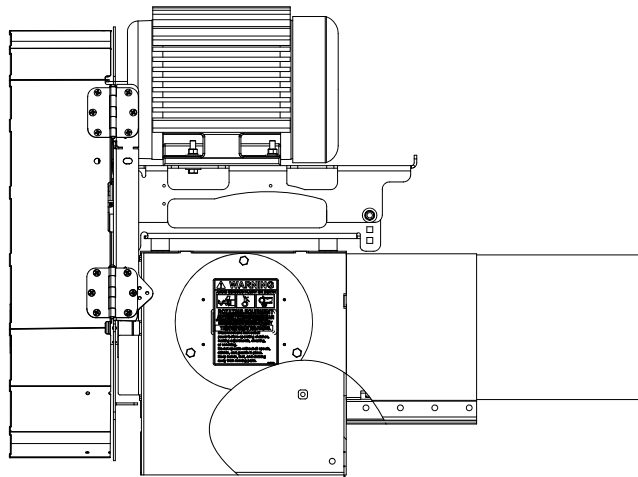
ITEM NO.	PART NUMBER	DESCRIPTION	QTY.
1	715-016W	TILT SPOUT WELDMENT	1
2	F-1019-03	199 LOCKWASHER, 3/8 HVY SPRING YELLOW PLATED/ HEAVY HELICAL SPRING TYPE	4
3	F-1006-23	199 CAPSCREW, 3/8-16 X 3/4" GR. 2 HEX HEAD, ZINC PLATED	10
4	F-1239	199 LOCKNUT, HEX 3/8-16 W/NYLOC UNC-2B W/NYLOC YELLOW PLATED	2
5	672-083P	INNER ANGLE	1
6	F-1008-23	199 BOLT, CARRIAGE, 3/8-16X3/4 GR.5 ZINC PLATED	2
7	672-035W	POWER HEAD PLATE	2



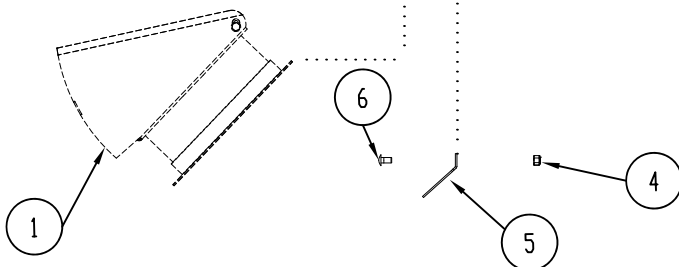
CONTINUED



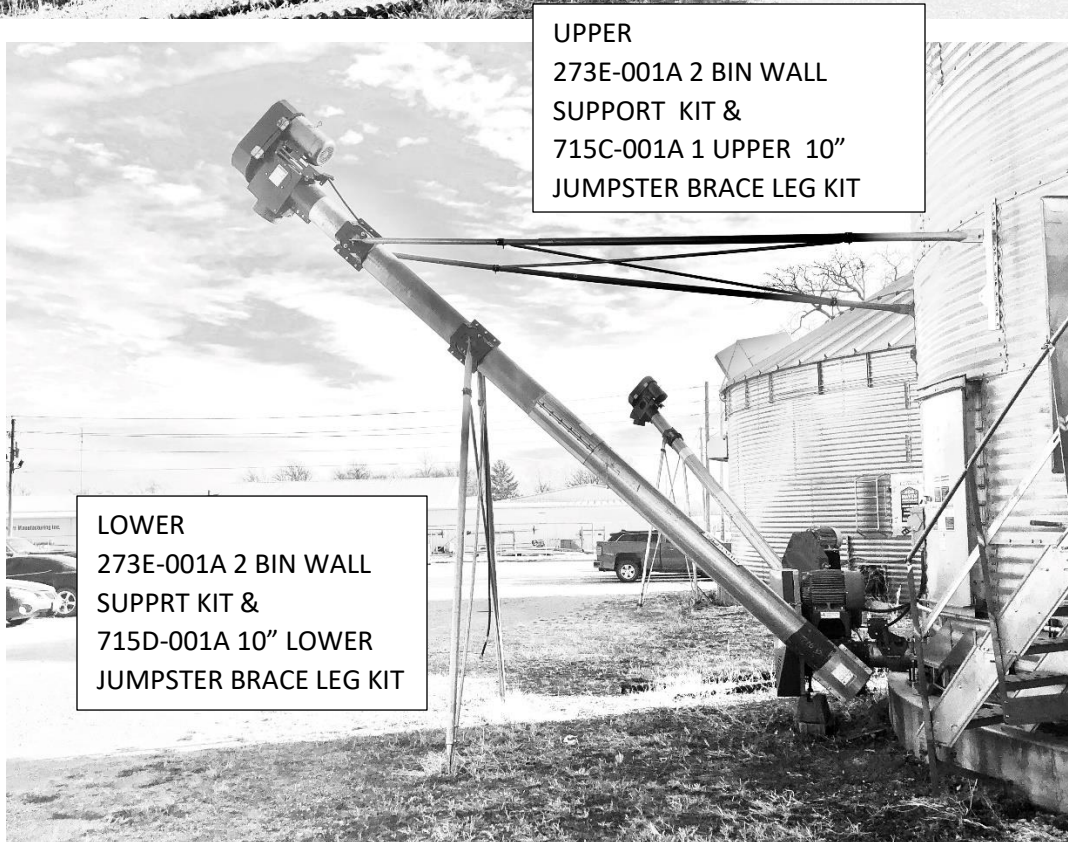
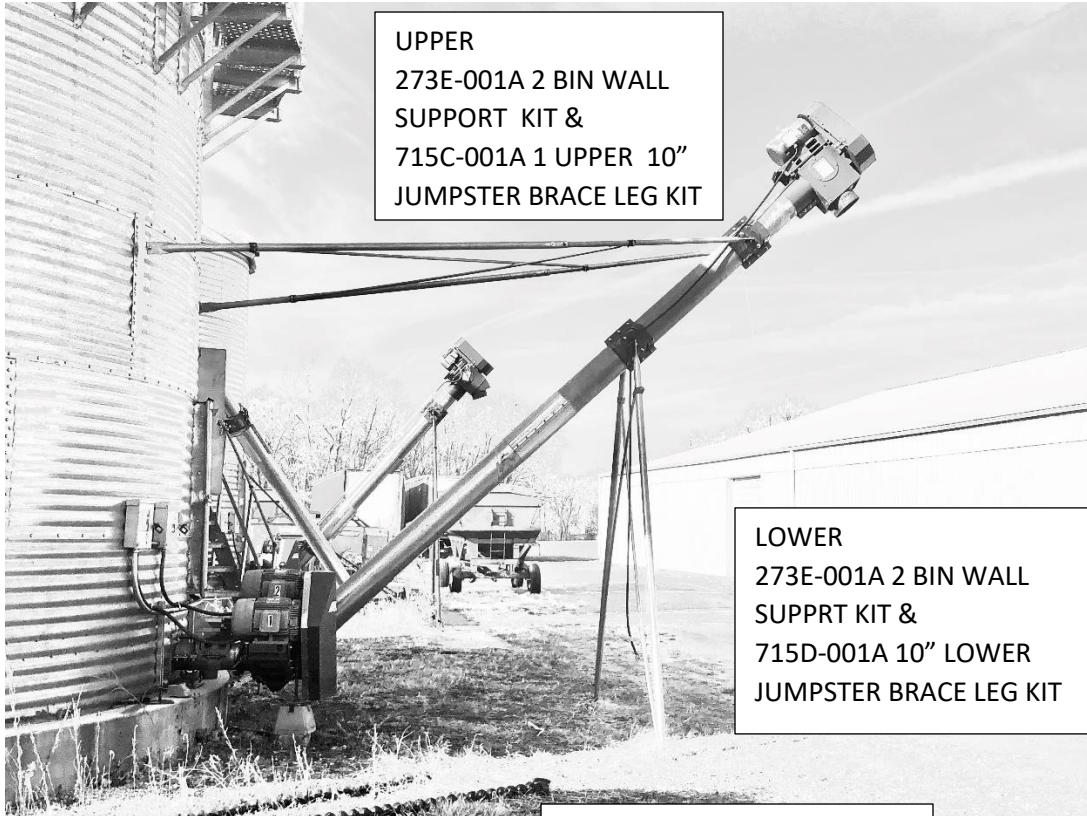
- A. BOLT INSIDE W/ CARRIAGE BOLTS ⑥
- B. KEEP LOOSE UNTIL SPOUT IS ADJUSTED TO ANGLE YOU WANT GRAIN TO BE DISCHARGE
- C. TIGHTEN HDW/ ANGLE ④⑤⑥



PART ⑤ INSTALLED ON THE INSIDE OF DISCHARGE HEAD.



EXAMPLE OF 10" JUMPSTER WITH UPPER, BIPOD SUPPORT KIT & LOWER BIPOD SUPPORT KIT (ADD-ON KITS) 90° VERTICAL



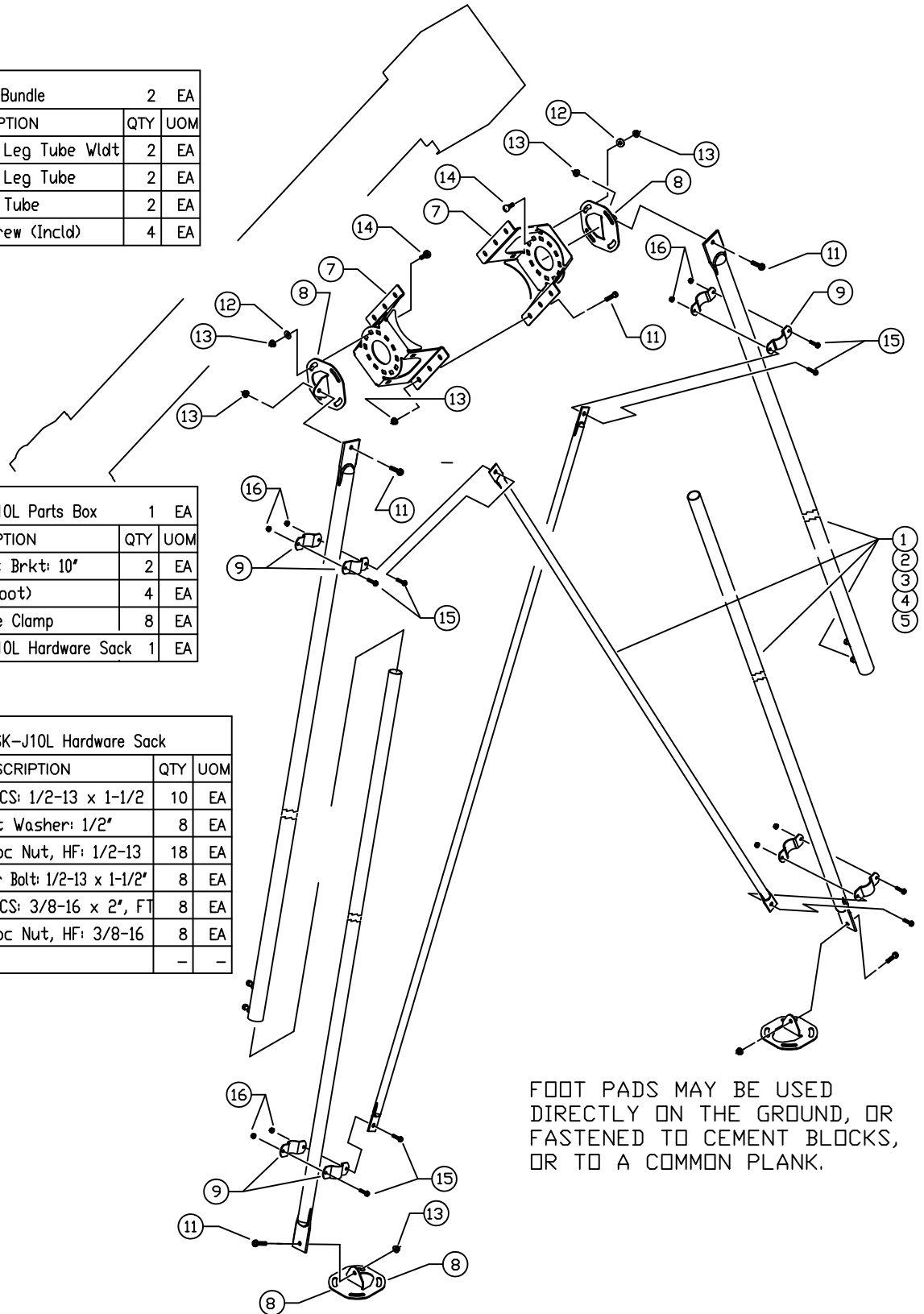
10-IN Jumpster Lower Bipod Assembly Instructions

BWSK-J10L

273E-001A Banded Bundle		2	EA
NO.	PART#	DESCRIPTION	QTY UOM
2	273-052W	Upper Leg Tube W/dt	2 EA
3	273-044P	Lower Leg Tube	2 EA
4	273-045P	Cross Tube	2 EA
5	F-1386	SetScrew (Incl)	4 EA

715D-001A BWSK-J10L Parts Box		1	EA
NO.	PART#	DESCRIPTION	QTY UOM
7	715-012P	Support Brkt: 10"	2 EA
8	273-087P	Base (Foot)	4 EA
9	273-050P	Leg Tube Clamp	8 EA
10	715-027A	BWSK-J10L Hardware Sack	1 EA

715-027A BWSK-J10L Hardware Sack			
NO.	PART#	DESCRIPTION	QTY UOM
11	F-2140	HFHCS: 1/2-13 x 1-1/2	10 EA
12	F-1009-05	Flat Washer: 1/2"	8 EA
13	F-2152	Nyloc Nut, HF: 1/2-13	18 EA
14	F-1965	Carr Bolt: 1/2-13 x 1-1/2"	8 EA
15	F-2055	HFHCS: 3/8-16 x 2", FT	8 EA
16	F-2151	Nyloc Nut, HF: 3/8-16	8 EA
17	-	-	-



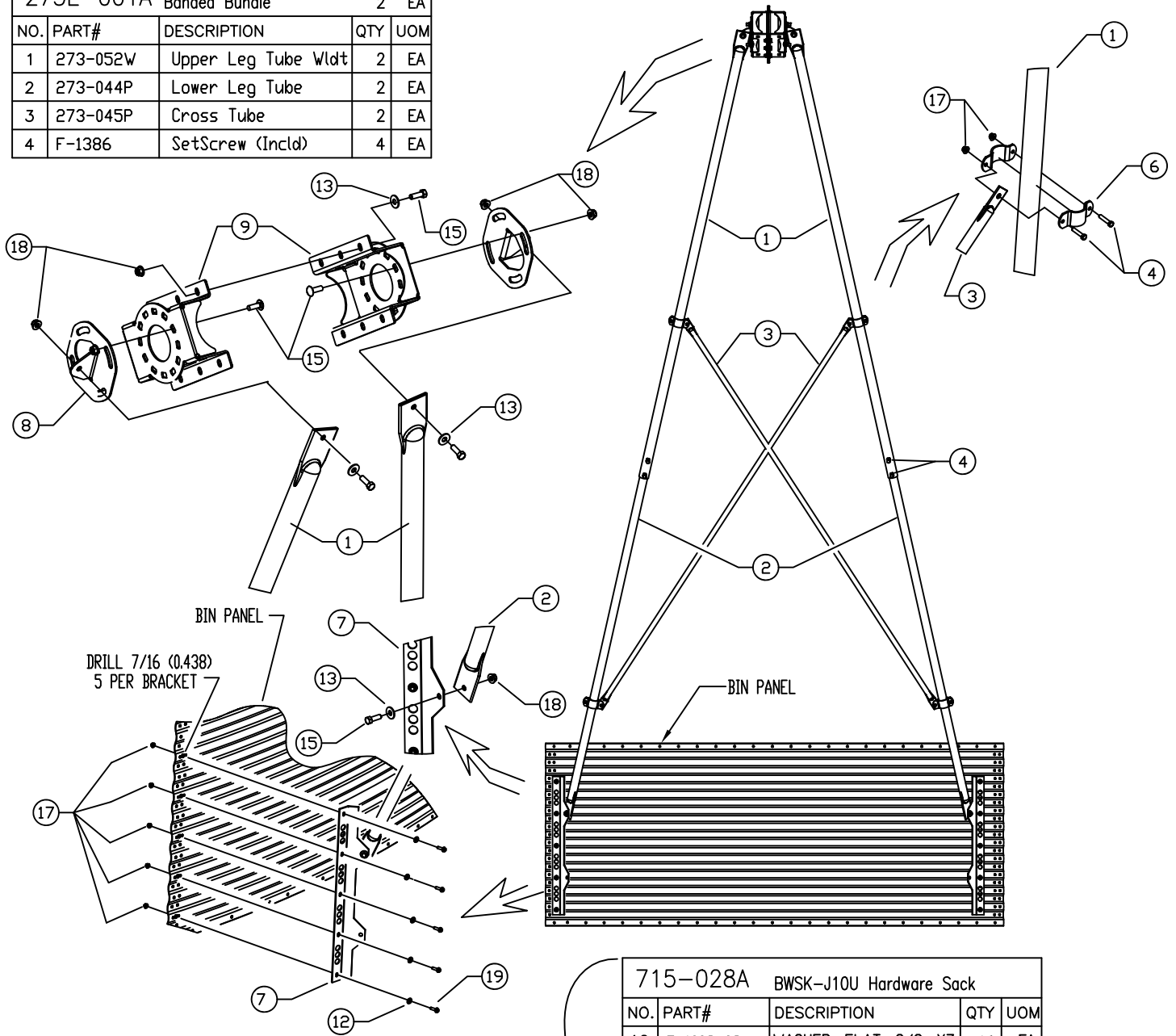
FOOT PADS MAY BE USED DIRECTLY ON THE GROUND, OR FASTENED TO CEMENT BLOCKS, OR TO A COMMON PLANK.

P-13655
Rev B, 021523

10-IN Jumpster Upper Bipod Assembly Instructions

BWSK-J10U

273E-001A Banded Bundle				2	EA
NO.	PART#	DESCRIPTION	QTY	UOM	
1	273-052W	Upper Leg Tube Wldt	2	EA	
2	273-044P	Lower Leg Tube	2	EA	
3	273-045P	Cross Tube	2	EA	
4	F-1386	SetScrew (Incld)	4	EA	

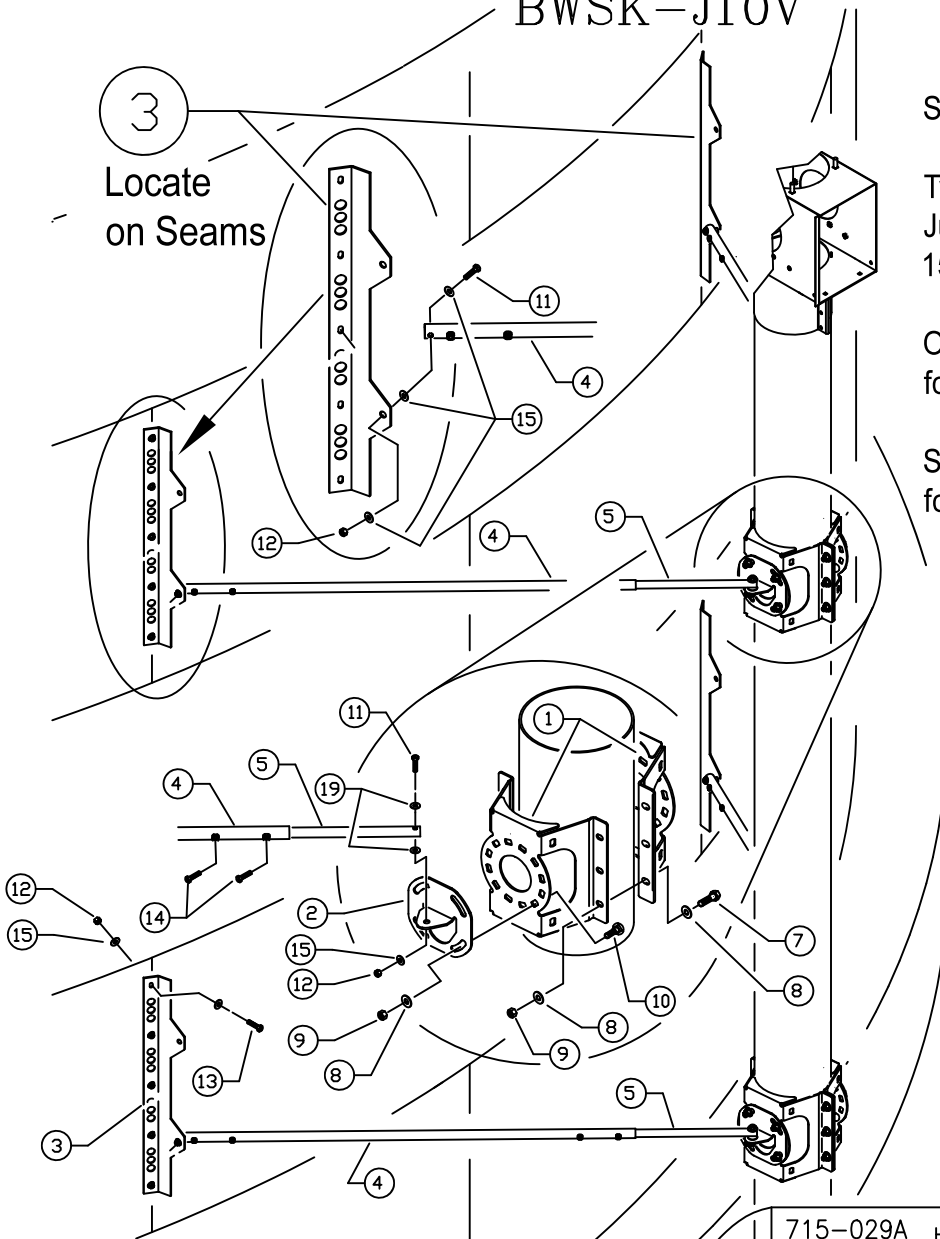


715C-001A BWSK-J10U Parts Box					
NO.	PART#	DESCRIPTION	QTY	UOM	
6	273-050P	Leg Tube Clamp	8	EA	
7	273-068P	Bin Angle Brkt	2	EA	
8	273-087P	Base (Foot)	2	EA	
9	715-012P	Support Brkt: 10"	2	EA	
10	715-028A	BWSK-J10U Hardware Sack	1	EA	
11	-	-	-	-	

715-028A BWSK-J10U Hardware Sack					
NO.	PART#	DESCRIPTION	QTY	UOM	
12	F-1009-03	WASHER, FLAT, 3/8, YZ	10	EA	
13	F-1009-05	Flat Washer: 1/2"	10	EA	
14	F-1015-28	HHCS, 3/8-16 X 1-3/4"	8	EA	
15	F-1526	HFHCS: 1/2-13 x 1-1/2"	10	EA	
16	F-1965	Carr Bolt: 1/2-13 x 1-1/2"	8	EA	
17	F-2151	Nyloc Nut, HF: 3/8-16	18	EA	
18	F-2152	Nyloc Nut, HF: 1/2-13	18	EA	
19	F-2325	BIN BOLT: 3/8-16 x 1-1/2"	10	EA	
20	-	-	-	-	

10-IN Jumpster Vertical Bipod Installation Instructions

BWSK-J10V



Shown with 2-Kits Installed.

Two (2) Kits recommended for Jumpsters Mounted Vertically 15Ft or longer.

Only One (1) Kit recommended for 10Ft or Shorter

Shown with Powerheads removed for clarity.

715E-001A Parts Box:10"JMPSTR VERT. INSTALL				
NO.	PART#	DESCRIPTION	QTY	UOM
1	715-012P	Support Brkt: 10"	2	EA
2	273-087P	Base (Foot)	2	EA
3	273-068P	Bin Angle Brkt	2	EA
4	275D-002W	Sppt Leg Wldt, Outside: 60°	2	EA
5	275D-004P	Sppt Leg, Inside: 60°	2	EA
6	715-029A	HDWE SK, 10" Jstr VERT	1	EA

Charts show quantity of parts for one 715E-001A Kit

715-029A HDWE SACK, 10"JSTR Vert. Install				
NO.	PART#	DESCRIPTION	QTY	UOM
6	715-013A	Jstr VERT HDWE SK	1	EA
7	F-2140	HFHCS: 1/2-13 x 1-1/2"	6	EA
8	F-1009-05	Flat Washer: 1/2"	20	EA
9	F-2152	Nyloc Nut, HF: 1/2-13	14	EA
10	F-1965	Carr Bolt: 1/2-13 x 1-1/2"	8	EA
11	F-2055	HFHCS: 3/8-16 x 2", FT	4	EA
12	F-2151	Nyloc Nut, HF: 3/8-16	4	EA
13	F-2325	Bin Bolt: 3/8 x 1-1/2"	10	EA
14	F-1307	HHCS: 3/8-16 x 1-1/4"	4	EA
15	F-1009-03	Flat Washer: 3/8"	22	EA

P-13667
Rev A, 021423